

DMS Wireless

5725-5850 MHz 120° V-Pol

Electrical Data

Frequency:	5725-5850 MHz
Gain:	17 dBi
VSWR:	<1.5:1
Polarization:	Vertical
Horizontal Beamwidth :	120°
Vertical Beamwidth:	3.5°
Nominal Impedance:	50 Ohms
F/B Ratio:	>20 dB
Max Input Power:	100 W
Lightning Protection:	DC Ground

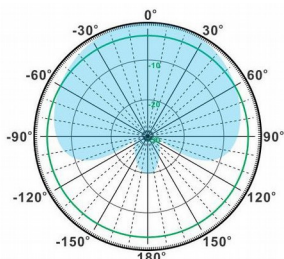
Mechanical Data

Connector :	N Female
Dimensions:	900*120*70mm
length*width*height	/35.43*4.73*2.76in
Weight:	2.8kg/6.18lb
Reflector Material:	PCB Array
Radome Material:	UV Resistance PVC
Mounting Method:	Mast
Mast Size:	Ø40-Ø70mm
Rated Wind Velocity:	210km/h
Operating temperature:	-40~+65°C

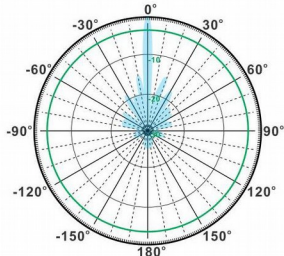
Shipment Data

Packing Qty:	1pc/Carton
Carton Size:	1200*160*115mm
(length*width*height)	/47.24*6.30*4.53in
Packing Weight:	3.6kg/7.93lb

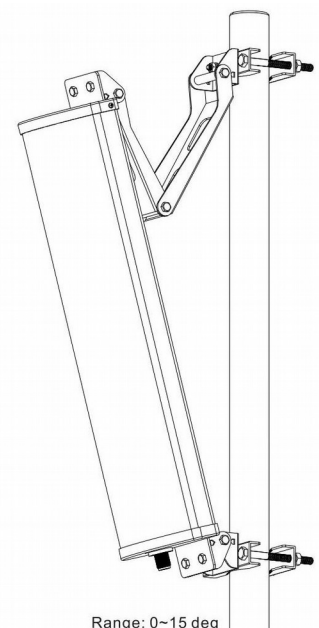
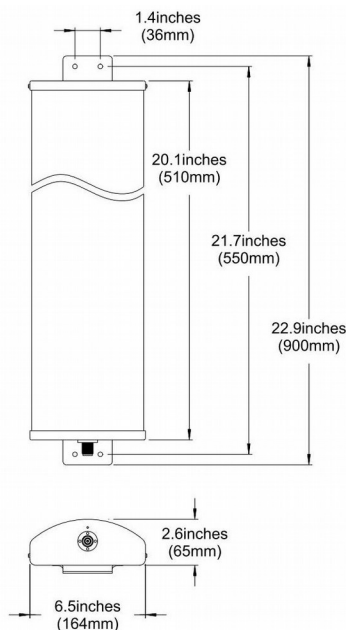
PA5725-5850-120-17V



H-Plane



V-Plane



Range: 0~15 deg

Email: sales@dmswireless.com
www.dmswireless.com

Notice: Specifications are subject to change without notice.
 Images may not reflect the actual product.