

**698-760 MHz 180° V-POL**

**PA698-760-180-14V**

**Electrical Data**

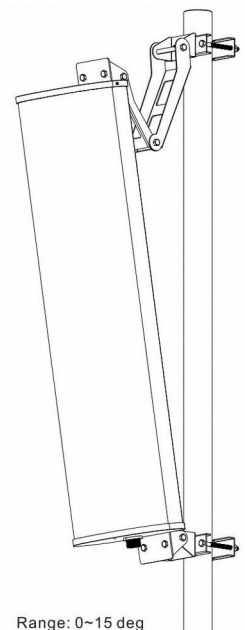
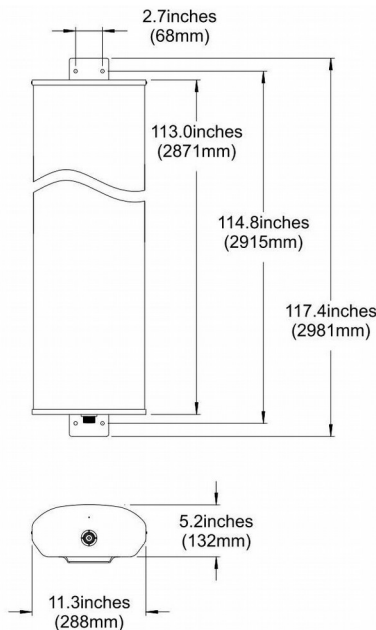
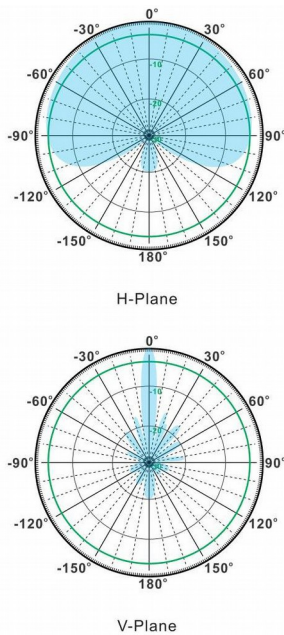
Frequency:	698-760 MHz
Gain:	14 dBi
VSWR:	<1.5:1
Polarization:	Vertical
Horizontal Beamwidth :	180°
Vertical Beamwidth:	7°
Nominal Impedance:	50 Ohms
F/B Ratio:	>20 dB
Max Input Power:	250 W
Lightning Protection:	DC Ground

**Mechanical Data**

Connector :	N Female
Dimensions:	2981*290*130mm
length*width*height	/117*4*11.4*5.1in
Weight:	20.9kg/46.0lb
Reflector Material:	Aluminum Alloy
Radome Material:	UV Resistance PVC
Mounting Method:	Mast
Mast Size:	Ø50-Ø90mm
Rated Wind Velocity:	210km/h
Operating temperature:	-40~+65°C

**Shipment Data**

Packing Qty:	1pc/Carton
Carton Size:	3380*330*195mm
(length*width*height)	/133.1*13.0*7.7in
Packing Weight:	21.6kg/47.5lb



Email: [sales@dmswireless.com](mailto:sales@dmswireless.com)  
[www.dmswireless.com](http://www.dmswireless.com)

Notice: Specifications are subject to change without notice.  
 Images may not reflect the actual product.