

# DMS Wireless

**2300-2400 MHz V- POL**

## Electrical Data

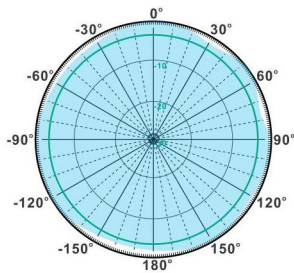
Frequency:	2300-2400 MHz
Gain:	12 dBi
VSWR:	<1.5:1
Polarization:	Vertical
Horizontal Beamwidth :	360°
Vertical Beamwidth:	7°
Nominal Impedance:	50 Ohms
Max Input Power:	100 W
Lightning Protection:	DC Ground

## Mechanical Data

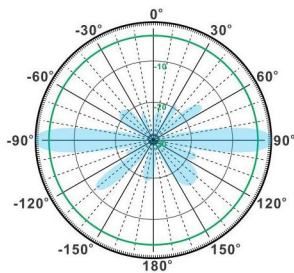
Connector :	N Female
Dimensions:	Ø38*1000mm
(diameter*length)	Ø1.5*39.37in
Weight:	1.5kg/3.3lb
Reflector Material:	Brass
Radome Material:	Fiberglass
Mounting Method:	Mast
Mast Size:	Ø40-Ø60mm
Rated Wind Velocity:	210km/h
Operating temperature:	-40~+65°C

## Shipment Data

Packing Qty:	2pcs/Carton
Carton Size:	Ø120*1100mm
(length*width*height)	Ø4.72*43.3in
Packing Weight:	4.6kg/10.13lb

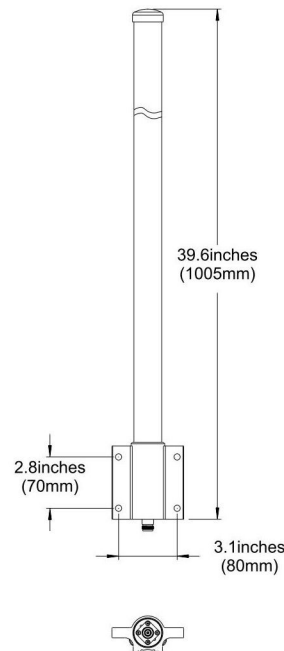
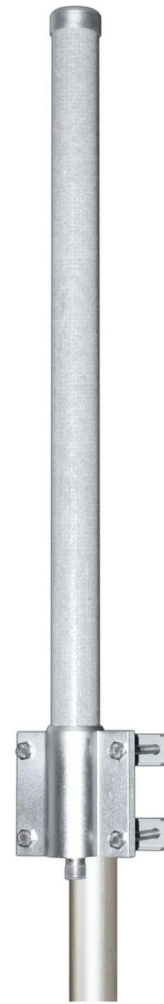


H-Plane



V-Plane

## OM2300-2400-12V



Email: [sales@dmswireless.com](mailto:sales@dmswireless.com)  
[www.dmswireless.com](http://www.dmswireless.com)

Notice: Specifications are subject to change without notice.  
Images may not reflect the actual product.