

DMS Wireless

890-960/1850-1990 MHz H-POL or V-POL

Electrical Data

Frequency:	890-960 MHz	1850-1990 MHz
Gain:	10.5 dBi	12 dBi
VSWR:	<1.5:1	<2.0:1
Polarization:	H or V	H or V
Horizontal Beamwidth :	52°	43°
Vertical Beamwidth:	41°	34°
Nominal Impedance:	50 Ohms	50 Ohms
F/B Ratio:	>16 dB	>14 dB
Max Input Power:	100 W	100 W
Lightning Protection:	DC Ground	DC Ground

Mechanical Data

Connector :	N Female
Dimensions:	1160mm/45.7in
Weight:	0.6kg/1.3lb
Cable Length:	240mm/9.5in
Reflector Material:	Aluminum Alloy
Mounting Method:	Mast
Mast Size:	Ø40-Ø50mm
Rated Wind Velocity:	210km/h
Operating temperature:	-40~+65°C

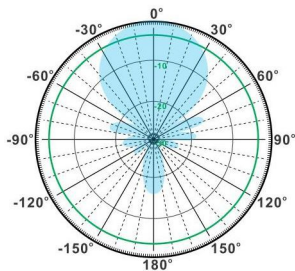
Shipment Data

Packing Qty:	20pcs/Carton
Carton Size:	1180*350*780mm
(length*width*height)	/46.5*13.8*30.7in
Packing Weight:	13kg/28.6lb

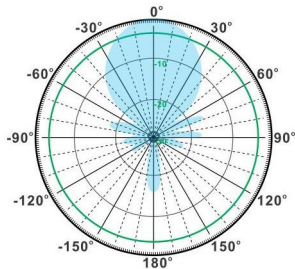
YA890-1990-10.5HV-12E



890-960 MHz

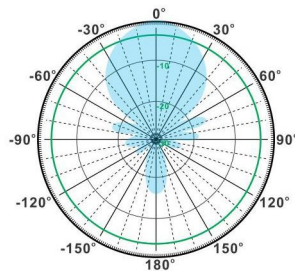


H-Plane

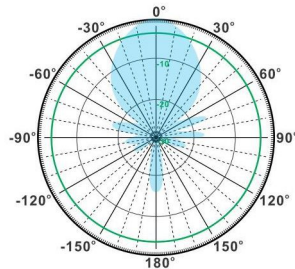


V-Plane

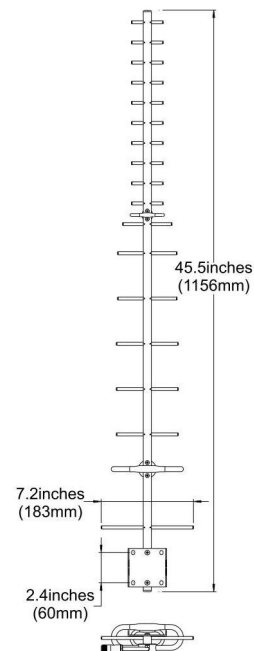
1850-1990 MHz



H-Plane



V-Plane



Email: sales@dmswireless.com
www.dmswireless.com

Notice: Specifications are subject to change without notice.
 Images may not reflect the actual product.