

DMS Wireless

2400-2500 MHz HV- POL

Electrical Data

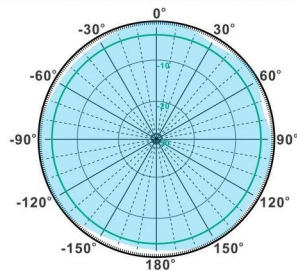
Frequency:	2400-2500 MHz
Gain:	10 dBi
VSWR:	<1.8:1
Polarization:	Horizontal and Vertical
Horizontal Beamwidth :	360°
Vertical Beamwidth:	12°
Isolation:	>30dB
Cross-polar ratio:	>20dB
Nominal Impedance:	50 Ohms
Max Input Power:	100 W
Lightning Protection:	DC Ground

Mechanical Data

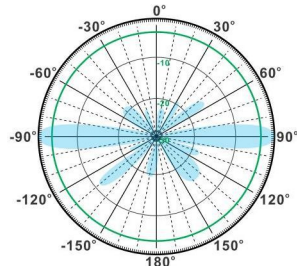
Connector :	2*N Female
Dimensions:	Ø84*802mm
(diameter*length)	Ø3.3*31.57in
Weight:	3kg/6.6lb
Reflector Material:	Aluminum Alloy
Radome Material:	UV Resistance PVC
Mounting Method:	Mast
Mast Size:	Ø40-Ø60mm
Rated Wind Velocity:	210km/h
Operating temperature:	-40~+65°C

Shipment Data

Packing Qty:	6pcs/Carton
Carton Size:	860*280*250mm
(length*width*height)	33.9*11.0*9.8in
Packing Weight:	18.8kg/41.4lb

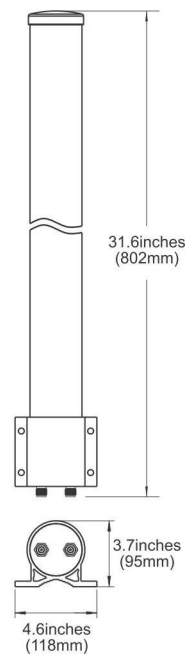
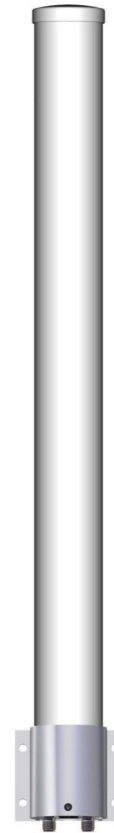


H-Plane



V-Plane

OM2400-2500-10HV



Email: sales@dmswireless.com
www.dmswireless.com

Notice: Specifications are subject to change without notice.
Images may not reflect the actual product.