

DMS Wireless

5150-5850 MHz 120° V-POL

Electrical Data

Frequency:	5150-5850 MHz
Gain:	15 dBi
VSWR:	<1.5:1
Polarization:	Vertical
Horizontal Beamwidth :	120°
Vertical Beamwidth:	7°
Nominal Impedance:	50 Ohms
F/B Ratio:	>25 dB
Max Input Power:	100 W
Lightning Protection:	DC Ground

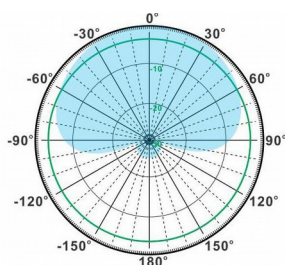
Mechanical Data

Connector :	N Female
Dimensions:	516*66*119mm
length*width*height	/20.3*2.6*4.7in
Weight:	2.8kg/6.2lb
Reflector Material:	PCB Array
Radome Material:	UV Resistance PVC
Mounting Method:	Mast
Mast Size:	Ø40-Ø70mm
Rated Wind Velocity:	210km/h
Operating temperature:	-40~+65°C

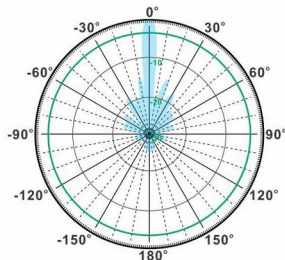
Shipment Data

Packing Qty:	1 pc/ Carton
Carton Size:	820*166*115mm
(length*width*height)	/32.3*6.5*4.5in
Packing Weight:	3.6kg/7.9lb

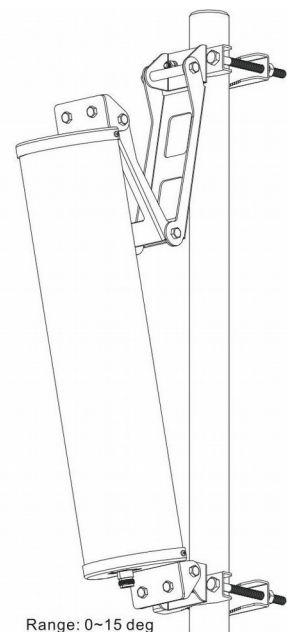
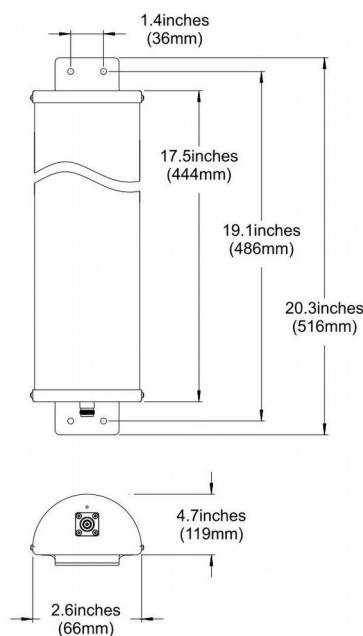
PA5150-5850-120-15V



H-Plane



V-Plane



Email: sales@dmswireless.com
www.dmswireless.com

Notice: Specifications are subject to change without notice.
Images may not reflect the actual product.