

# DMS Wireless

**3400-3600 MHz V-POL**

## Electrical Data

|                        |               |
|------------------------|---------------|
| Frequency:             | 3400-3600 MHz |
| Gain:                  | 6 dBi         |
| VSWR:                  | <1.5:1        |
| Polarization:          | Vertical      |
| Horizontal Beamwidth : | 360°          |
| Vertical Beamwidth:    | 21°           |
| Nominal Impedance:     | 50 Ohms       |
| Max Input Power:       | 100 W         |
| Lightning Protection:  | DC Ground     |

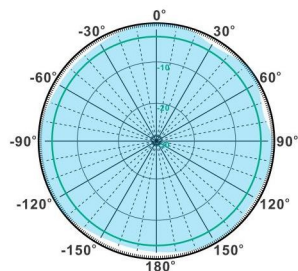
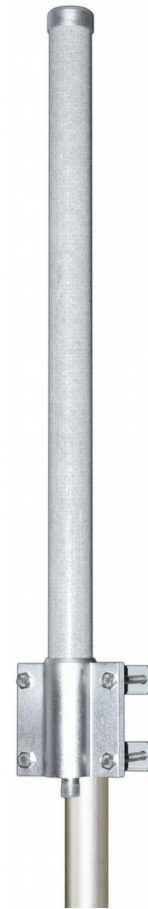
## Mechanical Data

|                        |             |
|------------------------|-------------|
| Connector :            | N Female    |
| Dimensions:            | Ø38*466mm   |
| (diameter*length)      | Ø1.5*18.3in |
| Weight:                | 0.9kg/1.9lb |
| Reflector Material:    | Brass       |
| Radome Material:       | Fiberglass  |
| Mounting Method:       | Mast        |
| Mast Size:             | Ø50-Ø80mm   |
| Rated Wind Velocity:   | 210km/h     |
| Operating temperature: | -40~+65°C   |

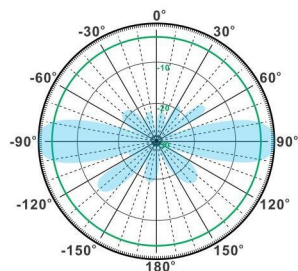
## Shipment Data

|                       |              |
|-----------------------|--------------|
| Packing Qty:          | 2pcs/Carton  |
| Carton Size:          | Ø120*560mm   |
| (length*width*height) | /Ø4.7*22.0in |
| Packing Weight:       | 2.7kg/6.0lb  |

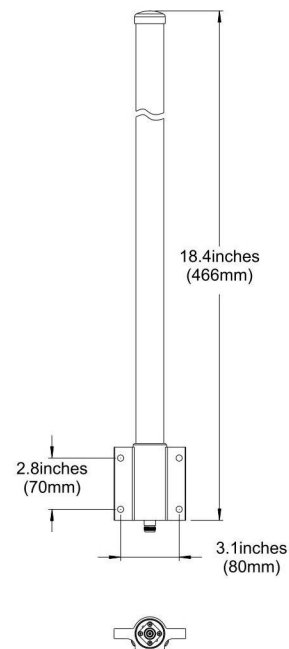
## OM3400-3600-6V



H-Plane



V-Plane



Email: [sales@dmswireless.com](mailto:sales@dmswireless.com)  
[www.dmswireless.com](http://www.dmswireless.com)

Notice: Specifications are subject to change without notice.  
Images may not reflect the actual product.