

# DMS Wireless

**5150-5850 MHz 90° V-POL**

## Electrical Data

Frequency:	5150-5850 MHz
Gain:	19 dBi
VSWR:	<1.5:1
Polarization:	Vertical
Horizontal Beamwidth :	90°
Vertical Beamwidth:	2.4°
Nominal Impedance:	50 Ohms
F/B Ratio:	>25 dB
Max Input Power:	100 W
Lightning Protection:	DC Ground

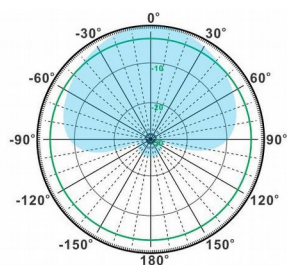
## Mechanical Data

Connector :	N Female
Dimensions:	900*120*70mm
length*width*height	/35.4*4.7*2.8in
Weight:	2.8kg/6.2lb
Reflector Material:	PCB Array
Radome Material:	UV Resistance PVC
Mounting Method:	Mast
Mast Size:	Ø40-Ø70mm
Rated Wind Velocity:	210km/h
Operating temperature:	-40~+65°C

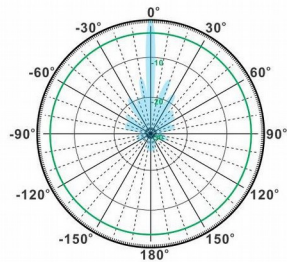
## Shipment Data

Packing Qty:	1 pc/ Carton
Carton Size:	1200*160*115mm
(length*width*height)	/47.2*6.3*4.5in
Packing Weight:	3.6kg/7.9lb

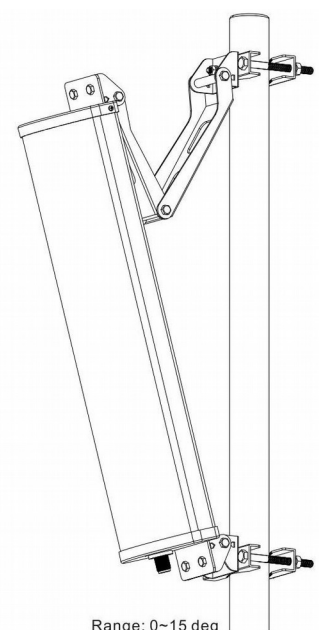
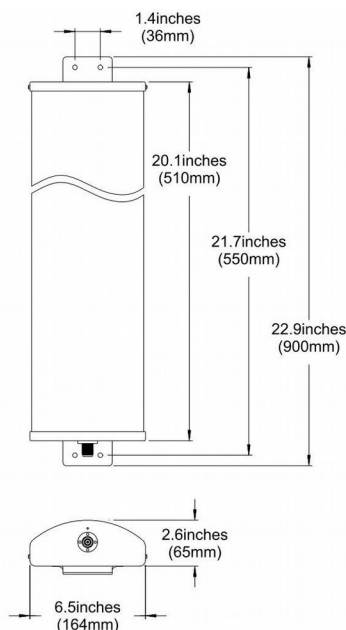
**PA5150-5850-90-19V**



H-Plane



V-Plane



Range: 0~15 deg

Email: [sales@dmswireless.com](mailto:sales@dmswireless.com)  
[www.dmswireless.com](http://www.dmswireless.com)

Notice: Specifications are subject to change without notice.  
 Images may not reflect the actual product.