

# DMS Wireless

**1710-1880 MHz 90° V-POL**

## Electrical Data

Frequency:	1710-1880 MHz
Gain:	16 dBi
VSWR:	<1.5:1
Polarization:	Vertical
Horizontal Beamwidth :	90°
Vertical Beamwidth:	7.2°
Nominal Impedance:	50 Ohms
F/B Ratio:	>20 dB
Max Input Power:	100 W
Lightning Protection:	DC Ground

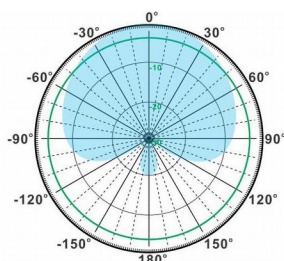
## Mechanical Data

Connector :	N Female
Dimensions:	1476*180*90mm
length*width*height	/58.1*7.1*3.5in
Weight:	4.6kg/10.1lb
Reflector Material:	Aluminum Alloy
Radome Material:	UV Resistance PVC
Mounting Method:	Mast
Mast Size:	Ø40-Ø70mm
Rated Wind Velocity:	210km/h
Operating temperature:	-40~+65°C

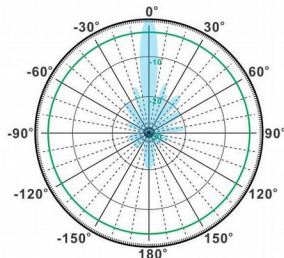
## Shipment Data

Packing Qty:	1pc/Carton
Carton Size:	1740*220*135cm
(length*width*height)	/68.5*8.7*5.3in
Packing Weight:	5.4kg/11.9lb

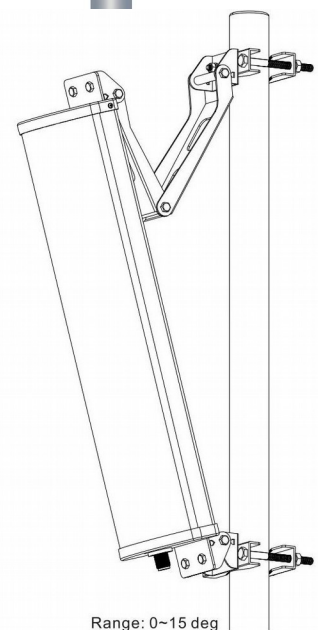
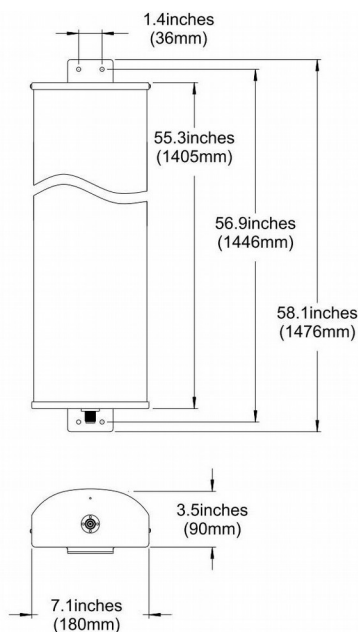
## PA1710-1880-90-16V



H-Plane



V-Plane



Email: [sales@dmswireless.com](mailto:sales@dmswireless.com)  
[www.dmswireless.com](http://www.dmswireless.com)

Notice: Specifications are subject to change without notice.  
Images may not reflect the actual product.