

DMS Wireless

806-960/1710-2200/2400-2500 MHz 65° X-POL

PA806-2500-65-12.5X

Electrical Data

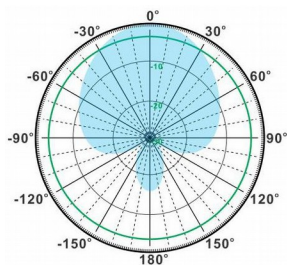
Frequency (MHz):	806-960	1710-2200	2400-2500
Gain:	12.5 dBi		
VSWR:	<1.5:1		
Polarization:	±45°		
Horizontal Beamwidth:	62°		
Vertical Beamwidth:	24°		
Electrical downtilt:	0°	2°	0°
Sidelobe suppression : (First sidelobe above main beam)	>15dB		
Front-to-back ratio :	>25dB		
Isolation:	>25dB	>28dB	
Cross-polar ratio:	>15dB (±60°≥10)		
Intermodulation IM3: (2x43dBm carrier)	>-150dBc		
Impedance:	50 Ohms		
Max Input Power:	100W		
Lightning Protection:	DC Ground		

Mechanical Data

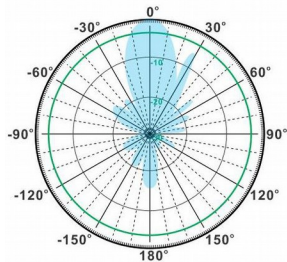
Connector :	4 * N Female
Connector position:	Bottom
Dimensions:	800*290*130mm
length*width*height	28.9*11.4*5.1in
Weight:	9.8kg/21.59lb
Reflector Material:	Aluminum Alloy
Radome Material:	UV Resistance PVC
Mounting Method:	Mast
Mast Size:	Ø50-Ø90mm
Rated Wind Velocity:	210km/h
Operating temperature:	-40~+65°C

Shipment Data

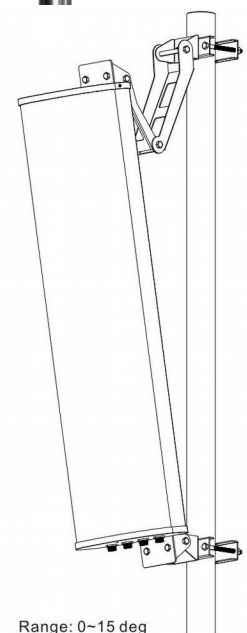
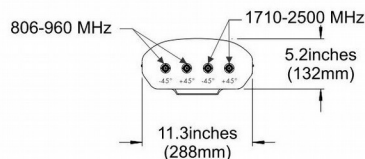
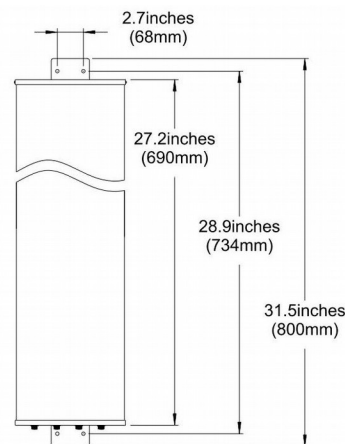
Packing Qty:	1pc/Carton
Carton Size:	1180*340*210mm
(length*width*height)	46.5*13.4*8.3in
Packing Weight:	11.5kg/25.3lb



H-Plane



V-Plane



Range: 0~15 deg

Email: sales@dmswireless.com
www.dmswireless.com

Notice: Specifications are subject to change without notice.
 Images may not reflect the actual product.