

689-760 MHz V-POL

Electrical Data

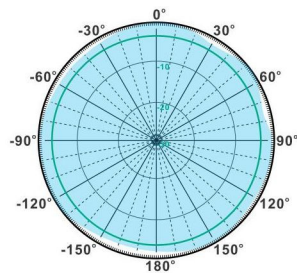
Frequency:	689-760 MHz
Gain:	6 dBi
VSWR:	<1.5:1
Polarization:	Vertical
Horizontal Beamwidth :	360°
Vertical Beamwidth:	21°
Nominal Impedance:	50 Ohms
Max Input Power:	250 W
Lightning Protection:	DC Ground

Mechanical Data

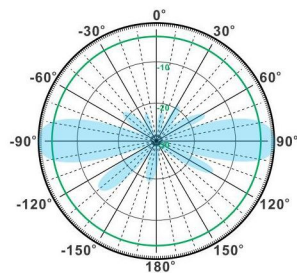
Connector :	N Female
Dimensions:	Ø50*2302mm
(diameter*length)	/ Ø2.0*90.6in
Weight:	3.5kg/7.7lb
Reflector Material:	Brass
Radome Material:	Fiberglass
Mounting Method:	Mast
Mast Size:	Ø50-Ø80mm
Rated Wind Velocity:	210km/h
Operating temperature:	-40~+65℃

Shipment Data

Packing Qty:	2pcs/Carton
Carton Size:	Ø149*2390mm
(length*width*height)	Ø5.9*94.1in
Packing Weight:	8.5kg/18.7lb

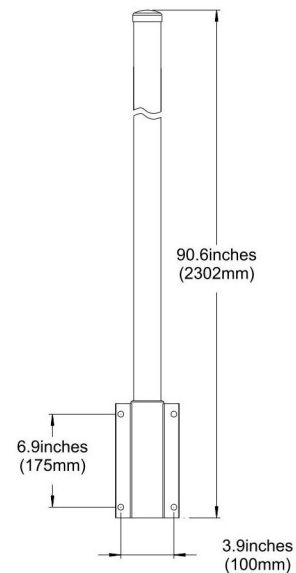
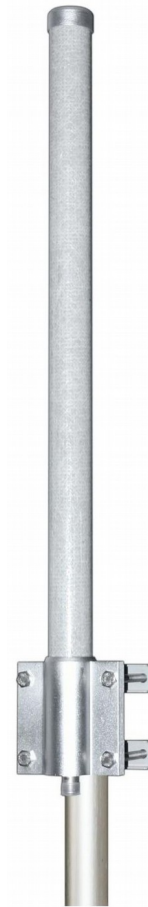


H-Plane



V-Plane

OM689-760-6V



Email: sales@dmswireless.com
www.dmswireless.com

Notice: Specifications are subject to change without notice.
 Images may not reflect the actual product.