

# DMS Wireless

**890-960 MHz H-POL or V-POL**

## Electrical Data

Frequency:	890-960 MHz
Gain:	14 dBi
VSWR:	<1.5:1
Polarization:	Horizontal or Vertical
Horizontal Beamwidth :	31°
Vertical Beamwidth:	29°
Nominal Impedance:	50 Ohms
F/B Ratio:	>16 dB
Max Input Power:	100 W
Lightning Protection:	DC Ground

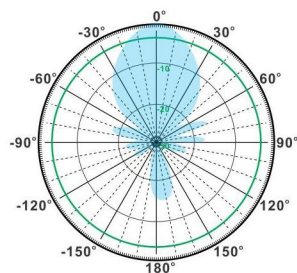
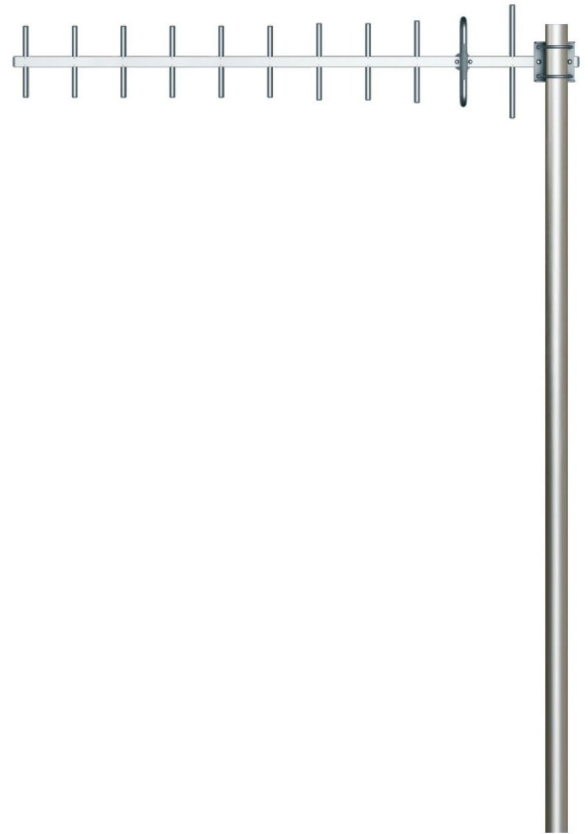
## Mechanical Data

Connector :	N Female
Dimensions:	1080mm/42.5in
Weight:	0.6kg/1.4lb
Cable Length:	300mm/11.8in
Reflector Material:	Aluminum Alloy
Mounting Method:	Mast
Mast Size:	Ø40-Ø50mm
Rated Wind Velocity:	210km/h
Operating temperature:	-40~+65°C

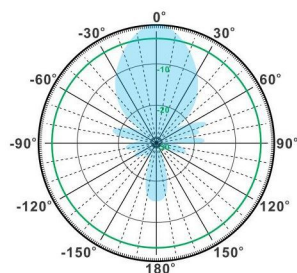
## Shipment Data

Packing Qty:	10pcs/Carton
Carton Size:	1105*390*325mm
(length*width*height)	/43.5*15.4*12.8in
Packing Weight:	7.5kg/16.5lb

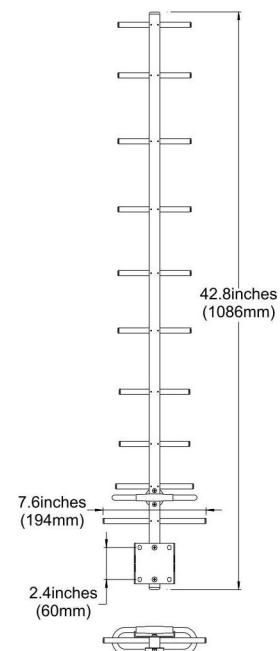
## YA890-960-14HV-11E



H-Plane



V-Plane



Email: [sales@dmswireless.com](mailto:sales@dmswireless.com)  
[www.dmswireless.com](http://www.dmswireless.com)

Notice: Specifications are subject to change without notice.  
Images may not reflect the actual product.