

DMS Wireless

2400-2483 MHz 90° V-POL

Electrical Data

Frequency:	2400-2483 MHz
Gain:	19 dBi
VSWR:	<1.5:1
Polarization:	Vertical
Horizontal Beamwidth :	90°
Vertical Beamwidth:	3.5°
Nominal Impedance:	50 Ohms
F/B Ratio:	>23 dB
Max Input Power:	100 W
Lightning Protection:	DC Ground

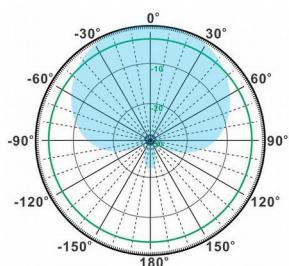
Mechanical Data

Connector :	N Female
Dimensions:	1950*165*70mm
length*width*height	/76.8*6.5*2.8in
Weight:	5.4kg/11.9lb
Reflector Material:	Aluminum Alloy
Radome Material:	UV Resistance PVC
Mounting Method:	Mast
Mast Size:	Ø40-Ø70mm
Rated Wind Velocity:	210km/h
Operating temperature:	-40~+65℃

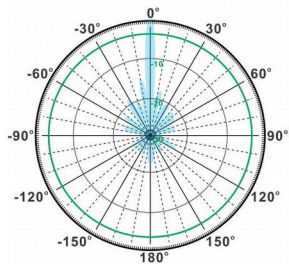
Shipment Data

Packing Qty:	1 pc/Carton
Carton Size:	2245*200*110mm
(length*width*height)	/88.4*7.9*4.3in
Packing Weight:	6.6kg/14.5lb

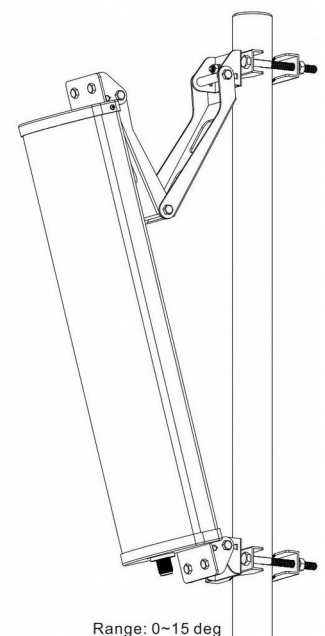
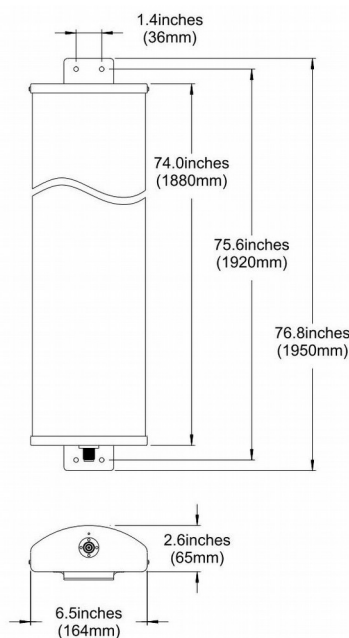
PA2400-2483-90-19V



H-Plane



V-Plane



Range: 0~15 deg

Email: sales@dmswireless.com
www.dmswireless.com

Notice: Specifications are subject to change without notice.
 Images may not reflect the actual product.