

DMS Wireless

380-400 MHz V-POL

Electrical Data

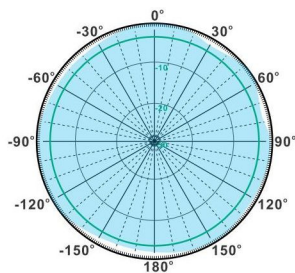
Frequency:	380-400 MHz
Gain:	8 dBi
VSWR:	<1.5:1
Polarization:	Vertical
Horizontal Beamwidth :	360°
Vertical Beamwidth:	15°
Nominal Impedance:	50 Ohms
Max Input Power:	250 W
Lightning Protection:	DC Ground

Mechanical Data

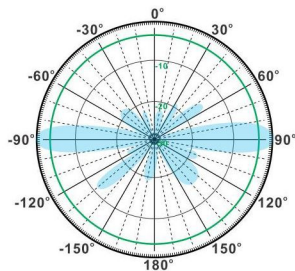
Connector :	7/16 DIN
Dimensions:	Ø50*3350mm
(diameter*length)	/Ø2.0*131.9in
Weight:	5.35kg/11.78lb
Reflector Material:	Brass
Radome Material:	Fiberglass
Mounting Method:	Mast
Mast Size:	Ø50-Ø80mm
Rated Wind Velocity:	210km/h
Operating temperature:	-40~+65°C

Shipment Data

Packing Qty:	2pcs/Carton
Carton Size:	Ø165*3470mm
(length*width*height)	Ø6.5*136.6in
Packing Weight:	12.7kg/28.0lb

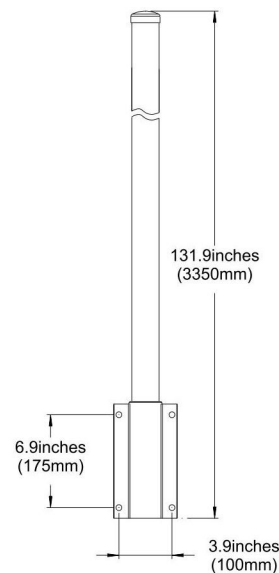
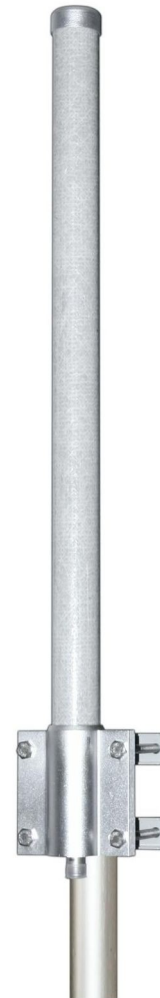


H-Plane



V-Plane

OM380-400-8V



Email: sales@dmswireless.com
www.dmswireless.com

Notice: Specifications are subject to change without notice.
Images may not reflect the actual product.