

DMS Wireless

806-960 MHz 90° V-POL

Electrical Data

Frequency:	806-960 MHz
Gain:	12 dBi
VSWR:	<1.5:1
Polarization:	Vertical
Horizontal Beamwidth :	90°
Vertical Beamwidth:	26°
Nominal Impedance:	50 Ohms
F/B Ratio:	>18 dB
Max Input Power:	250 W
Lightning Protection:	DC Ground

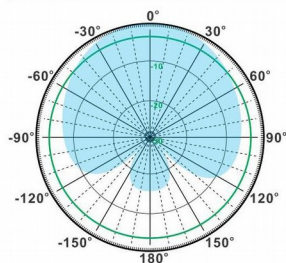
Mechanical Data

Connector :	N Female
Dimensions:	694*290*130mm
length*width*height	/27.3*11.4*5.1in
Weight:	9.8kg/21.6lb
Reflector Material:	Aluminum Alloy
Radome Material:	UV Resistance PVC
Mounting Method:	Mast
Mast Size:	Ø50-Ø90mm
Rated Wind Velocity:	210km/h
Operating temperature:	-40~+65°C

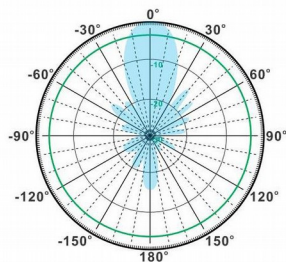
Shipment Data

Packing Qty:	1pc/Carton
Carton Size:	1010*330*195mm
(length*width*height)	/39.8*13.0*7.7in
Packing Weight:	11.5kg/25.3lb

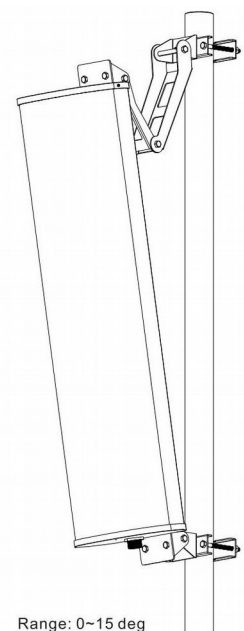
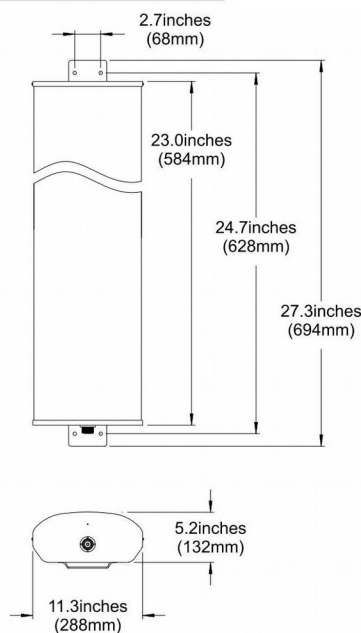
PA806-960-90-12V



H-Plane



V-Plane



Range: 0~15 deg

Email: sales@dmswireless.com
www.dmswireless.com

Notice: Specifications are subject to change without notice.
Images may not reflect the actual product.