

DMS Wireless

1710-1880/1850-1990/1920-2170 MHz 65° X-POL

PA1710-2170-65-18X

Electrical Data

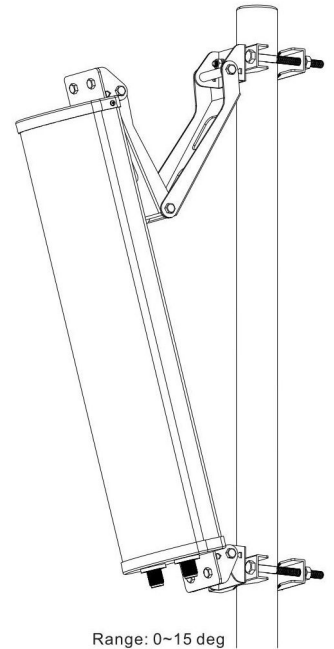
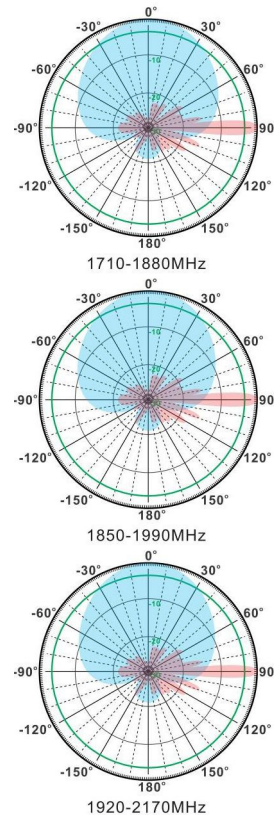
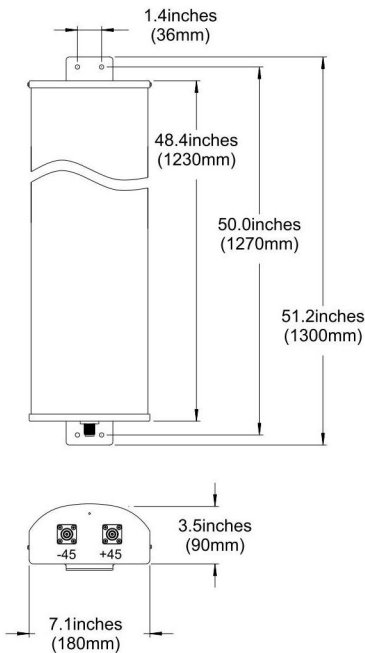
Frequency(MHZ):	1710-1880	1850-1990	1920-2170
Gain:	18 dBi		
VSWR:	<1.5:1		
Polarization:	±45°		
Horizontal Beamwidth:	68°	65°	63°
Vertical Beamwidth:	9°	8°	7°
Electrical downtilt:	0°		
Sidelobe suppression :	>15dB		
(First sidelobe above main beam)			
Front-to-back ratio :	>25dB		
Isolation:	>30dB		
Cross-polar ratio:	>15dB (±60°≥10)		
Intermodulation IM3:	>-150dBc		
(2x43dBm carrier)			
Impedance:	50 Ohms		
Max Input Power:	100W		
Lightning Protection:	DC Ground		

Mechanical Data

Connector :	2*N Female
Connector position:	Bottom
Dimensions:	1300*180*100mm
length*width*height	/51.2*6.5*2.8in
Weight:	8kg/17.6lb
Reflector Material:	Aluminum Alloy
Radome Material:	UV Resistance PVC
Mounting Method:	Mast
Mast Size:	Ø40-Ø70mm
Rated Wind Velocity:	210km/h
Operating temperature:	-40~+65°C

Shipment Data

Packing Qty:	1pc/Carton
Carton Size:	1790*220*135mm
(length*width*height)	70.5*8.7*5.3in
Packing Weight:	9kg/19.8lb



Email: sales@dmswireless.com
www.dmswireless.com

Notice: Specifications are subject to change without notice.
 Images may not reflect the actual product.