

DMS Wireless

2400-2483 MHz 65° V-POL

Electrical Data

Frequency:	2400-2483 MHz
Gain:	18 dBi
VSWR:	<1.5:1
Polarization:	Vertical
Horizontal Beamwidth :	65°
Vertical Beamwidth:	7.2°
Nominal Impedance:	50 Ohms
F/B Ratio:	>20 dB
Max Input Power:	100 W
Lightning Protection:	DC Ground

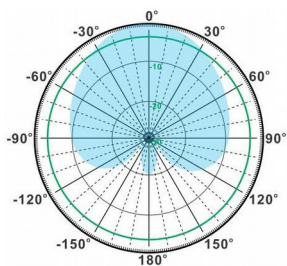
Mechanical Data

Connector :	N Female
Dimensions:	1045*165*70mm
length*width*height	/41.2*6.5*2.8in
Weight:	4.1kg/9.0lb
Reflector Material:	Aluminum Alloy
Radome Material:	UV Resistance PVC
Mounting Method:	Mast
Mast Size:	Ø40-Ø70mm
Rated Wind Velocity:	210km/h
Operating temperature:	-40~+65°C

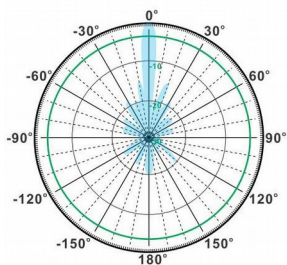
Shipment Data

Packing Qty:	1pc/Carton
Carton Size:	1310*200*110mm
(length*width*height)	/51.6*7.9*4.3in
Packing Weight:	5kg/11lb

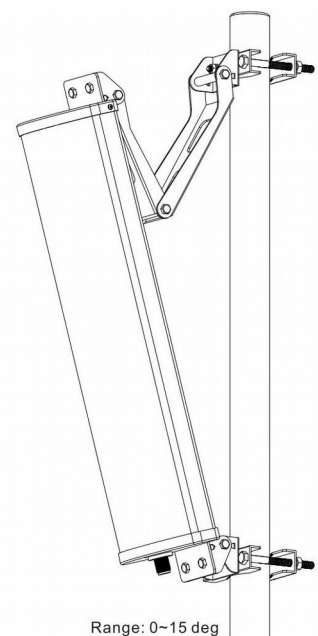
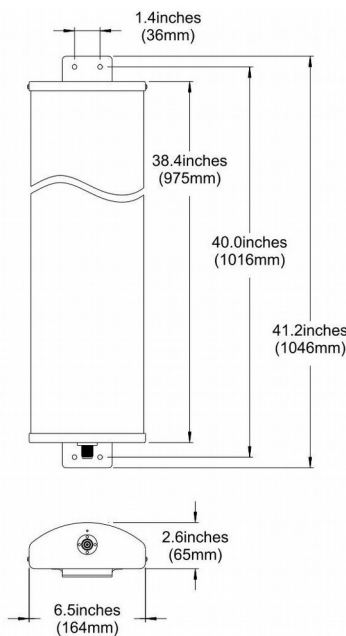
PA2300-2483-65-18V



H-Plane



V-Plane



Email: sales@dmswireless.com
www.dmswireless.com

Notice: Specifications are subject to change without notice.
 Images may not reflect the actual product.