

# DMS Wireless

5150-5850 MHz 65° HV-POL

PA5150-5850-65-16HV-2S

## Electrical Data

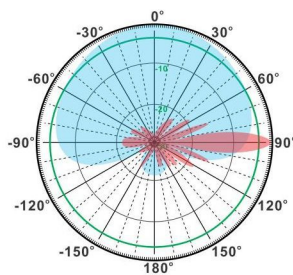
Frequency:	5150-5850 MHz
Gain:	16 dBi
VSWR:	<1.5:1
Polarization:	Horizontal and Vertical
Horizontal Beamwidth:	120°
Vertical Beamwidth:	7°
Electrical downtilt:	0°
Front-to-back ratio :	>23dB
Isolation:	>30dB
Cross-polar ratio:	>15dB ( $\pm 60^\circ \geq 10$ )
Impedance:	50 Ohms
Max Input Power:	100W
Lightning Protection:	DC Ground

## Mechanical Data

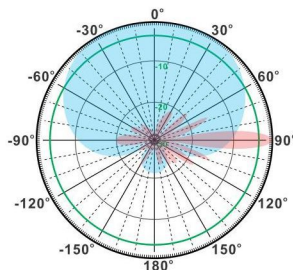
Connector :	2*SMA Female or customized
Connector position:	Bottom
Dimensions:	700*115*55mm
length*width*height	15.7*4.5*2.2in
Weight:	1.5kg/3.3lb
Reflector Material:	Aluminum Alloy
Radome Material:	UV Resistance PVC
Mounting Method:	Mast
Mast Size:	Ø40-Ø70mm
Rated Wind Velocity:	210km/h
Operating temperature:	-40~+65°C

## Shipment Data

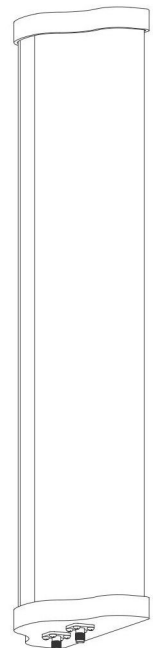
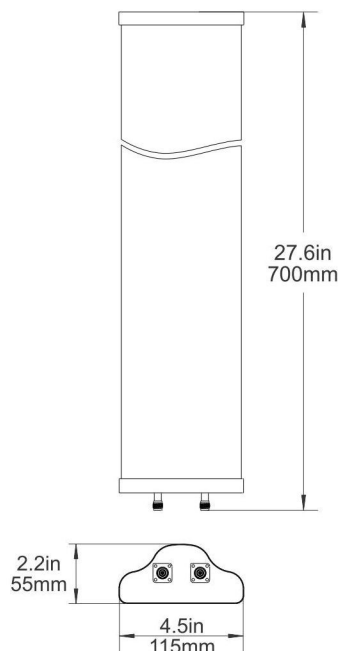
Packing Qty:	4pc/Carton
Carton Size:	770*360*300mm
(length*width*height)	30.3*14.2*11.8in
Packing Weight:	7kg/15.4lb



H-Plane



V-Plane



Email: [sales@dmswireless.com](mailto:sales@dmswireless.com)  
[www.dmswireless.com](http://www.dmswireless.com)

Notice: Specifications are subject to change without notice.  
Images may not reflect the actual product.