

# DMS Wireless

**760-780 MHz 180° V-POL**

## Electrical Data

Frequency:	760-780 MHz
Gain:	12 dBi
VSWR:	<1.5:1
Polarization:	Vertical
Horizontal Beamwidth :	180°
Vertical Beamwidth:	13°
Nominal Impedance:	50 Ohms
F/B Ratio:	>20 dB
Max Input Power:	250 W
Lightning Protection:	DC Ground

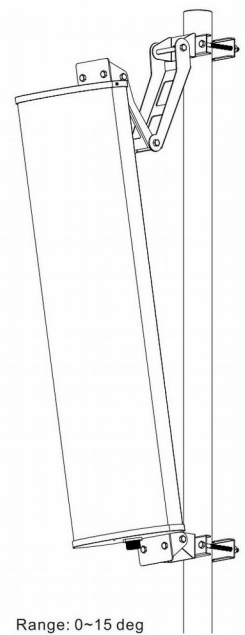
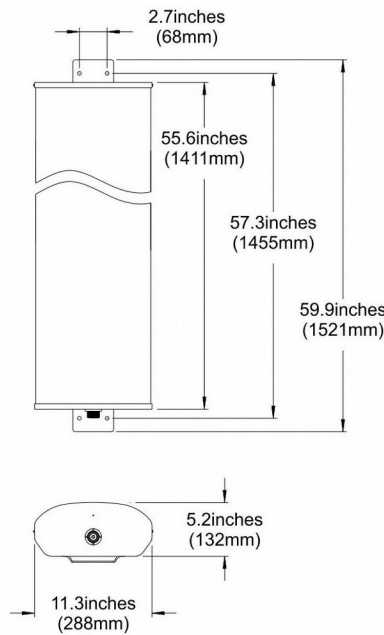
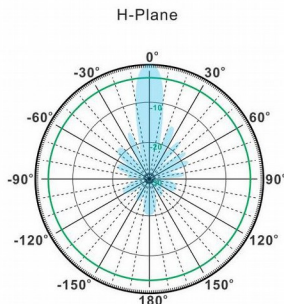
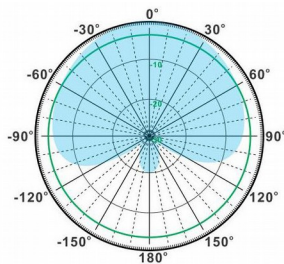
## Mechanical Data

Connector :	N Female
Dimensions:	1521*290*130mm
length*width*height	/59.9*11.4*5.1in
Weight:	12kg/26.4lb
Reflector Material:	Aluminum Alloy
Radome Material:	UV Resistance PVC
Mounting Method:	Mast
Mast Size:	Ø50-Ø90mm
Rated Wind Velocity:	210km/h
Operating temperature:	-40~+65°C

## Shipment Data

Packing Qty:	1pc/Carton
Carton Size:	1920*330*195mm
(length*width*height)	/75.6*13.0*7.7in
Packing Weight:	13.2kg/29.0lb

## PA760-780-180-12V



Email: [sales@dmswireless.com](mailto:sales@dmswireless.com)  
[www.dmswireless.com](http://www.dmswireless.com)

Notice: Specifications are subject to change without notice.  
 Images may not reflect the actual product.