

# DMS Wireless

698-760 MHz 120° V-POL

## Electrical Data

Frequency:	698-760 MHz
Gain:	11 dBi
VSWR:	<1.5:1
Polarization:	Vertical
Horizontal Beamwidth :	120°
Vertical Beamwidth:	26°
Nominal Impedance:	50 Ohms
F/B Ratio:	>18 dB
Max Input Power:	250 W
Lightning Protection:	DC Ground

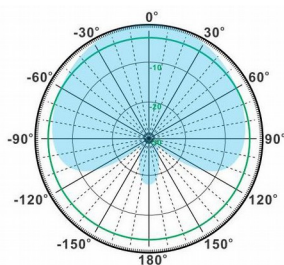
## Mechanical Data

Connector :	N Female
Dimensions:	791*290*130mm
length*width*height	/31.1*11.4*5.1in
Weight:	10kg/22.0lb
Reflector Material:	Aluminum Alloy
Radome Material:	UV Resistance PVC
Mounting Method:	Mast
Mast Size:	Ø50-Ø90mm
Rated Wind Velocity:	210km/h
Operating temperature:	-40~+65°C

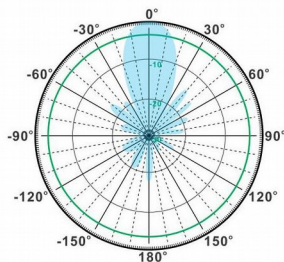
## Shipment Data

Packing Qty:	1pc/Carton
Carton Size:	1190*330*195mm
(length*width*height)	/46.9*13.0*7.7in
Packing Weight:	10.4kg/22.9

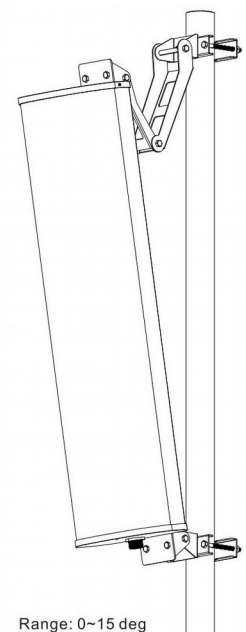
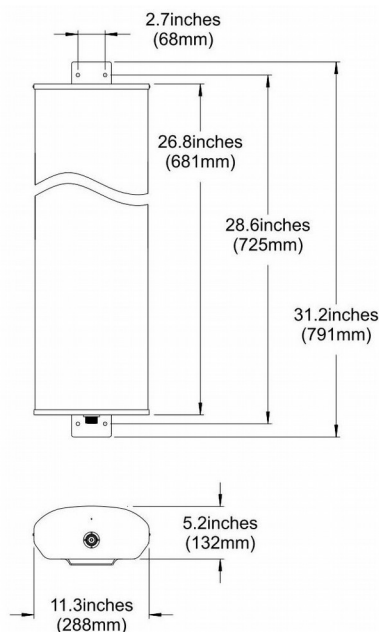
## PA698-760-120-11V



H-Plane



V-Plane



Range: 0~15 deg

Email: [sales@dmswireless.com](mailto:sales@dmswireless.com)  
[www.dmswireless.com](http://www.dmswireless.com)

Notice: Specifications are subject to change without notice.  
Images may not reflect the actual product.