

DMS Wireless

698-760 MHz V-POL

Electrical Data

Frequency:	698-760 MHz
Gain:	11 dBi
VSWR:	<1.5:1
Polarization:	Vertical
Horizontal Beamwidth :	360°
Vertical Beamwidth:	7.2°
Nominal Impedance:	50 Ohms
Max Input Power:	250 W
Lightning Protection:	DC Ground

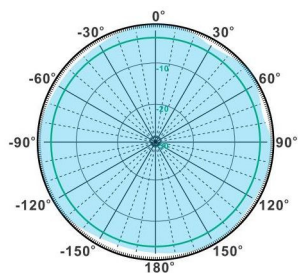
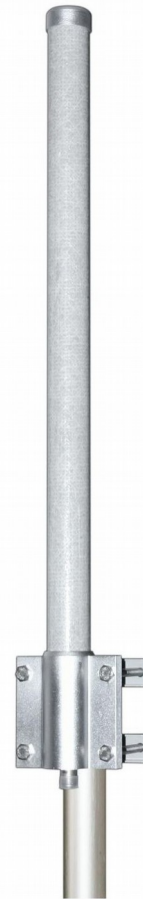
Mechanical Data

Connector :	N Female
Dimensions:	Ø50*3352mm
(diameter*length)	/ Ø2.0*132.0in
Weight:	6.2kg/13.6lb
Reflector Material:	Brass
Radome Material:	Fiberglass
Mounting Method:	Mast
Mast Size:	Ø50-Ø80mm
Rated Wind Velocity:	210km/h
Operating temperature:	-40~+65°C

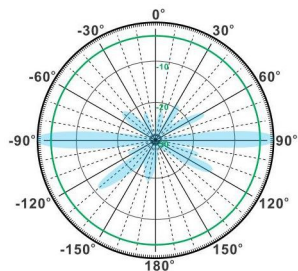
Shipment Data

Packing Qty:	2pcs/Carton
Carton Size:	Ø149*3440mm
(length*width*height)	/Ø5.9*135.4in
Packing Weight:	17.1kg/37.6lb

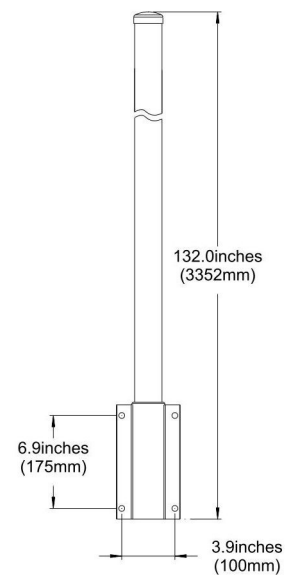
OM689-760-11V



H-Plane



V-Plane



Email: sales@dmswireless.com
www.dmswireless.com

Notice: Specifications are subject to change without notice.
Images may not reflect the actual product.