

## 900-930 MHz H-POL or V-POL

### Electrical Data

Frequency:	900-930 MHz
Gain:	16 dBi
VSWR:	<1.5:1
Polarization:	Horizontal or Vertical
Horizontal Beamwidth :	32°
Vertical Beamwidth:	30°
Nominal Impedance:	50 Ohms
F/B Ratio:	>18 dB
Max Input Power:	100 W
Lightning Protection:	DC Ground

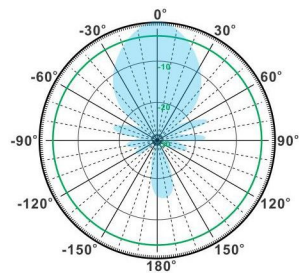
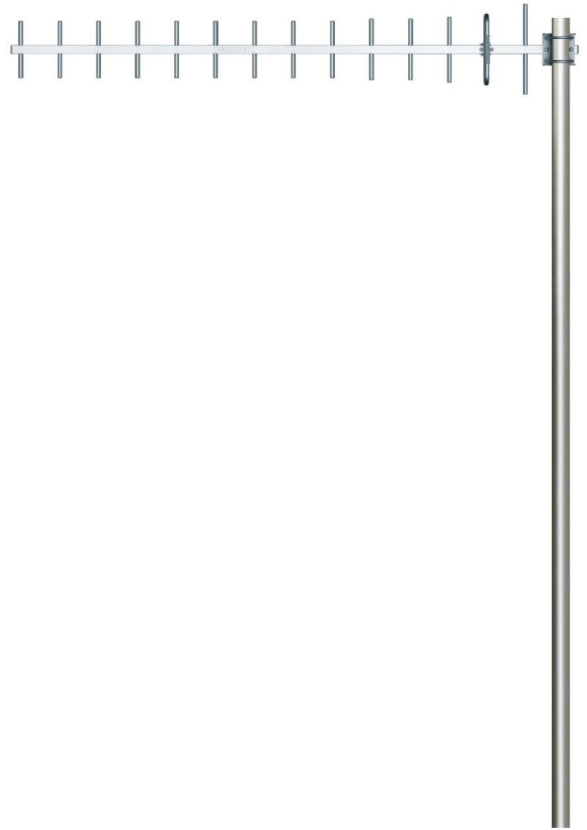
### Mechanical Data

Connector :	N Female
Dimensions:	1420mm/55.9in
Weight:	1.1kg/2.4lb
Cable Length:	300mm/11.8in
Reflector Material:	Aluminum Alloy
Antenna Material:	Mast
Mast Size:	Ø40-Ø50mm
Rated Wind Velocity:	210km/h
Operating temperature:	-40~+65°C

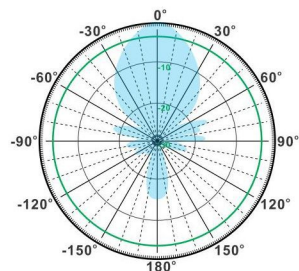
### Shipment Data

Packing Qty:	10pcs/Carton
Carton Size:	1450*390*325mm
(length*width*height)	/57.1*15.4*12.8in
Packing Weight:	13.1kg/28.8lb

## YA900-930-16HV-14E



H-Plane



V-Plane

