

# DMS Wireless

**1850-1960 MHz H-POL or V-POL**

## Electrical Data

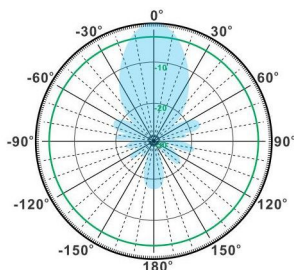
Frequency:	1850-1960 MHz
Gain:	16 dBi
VSWR:	<1.5:1
Polarization:	Horizontal or Vertical
Horizontal Beamwidth :	27°
Vertical Beamwidth:	23°
Nominal Impedance:	50 Ohms
F/B Ratio:	>18 dB
Max Input Power:	100 W
Lightning Protection:	DC Ground

## Mechanical Data

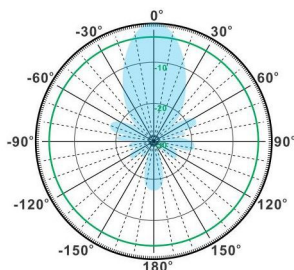
Connector :	N Female
Dimensions:	760mm/29.9in
Weight:	0.5kg/1.01lb
Cable Length:	360mm/14.2in
Reflector Material:	Aluminum Alloy
Mounting Method:	Mast
Mast Size:	Ø40-Ø50mm
Rated Wind Velocity:	210km/h
Operating temperature:	-40~+65°C

## Shipment Data

Packing Qty:	20pcs/Carton
Carton Size:	790*465*275mm
(length*width*height)	/30.1*18.3*10.8in
Packing Weight:	10.8kg/23.8lb

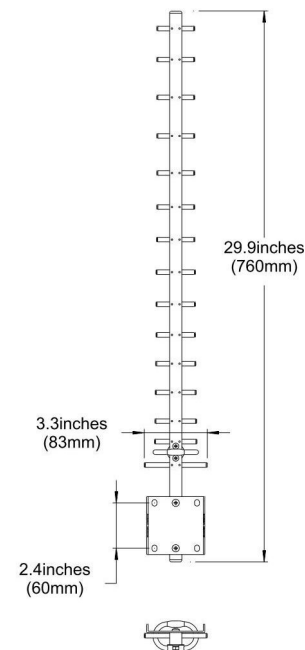
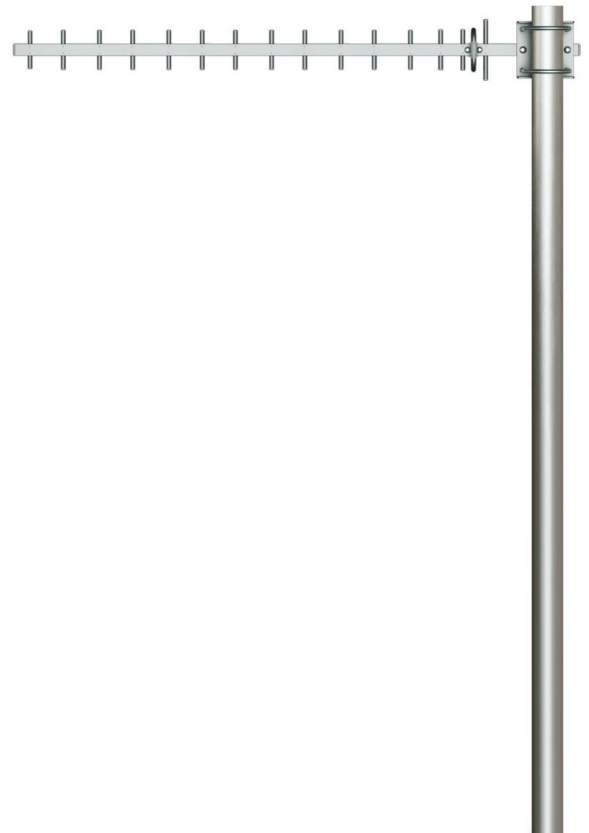


H-Plane



V-Plane

## YA1850-1960-16HV-16E



Email: [sales@dmswireless.com](mailto:sales@dmswireless.com)  
[www.dmswireless.com](http://www.dmswireless.com)

Notice: Specifications are subject to change without notice.  
Images may not reflect the actual product.