

# DMS Wireless

**1850-1960 MHz 120° V-POL**

## Electrical Data

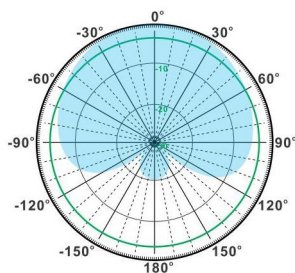
Frequency:	1850-1960 MHz
Gain:	11 dBi
VSWR:	<1.5:1
Polarization:	Vertical
Horizontal Beamwidth :	120°
Vertical Beamwidth:	30°
Nominal Impedance:	50 Ohms
F/B Ratio:	>20 dB
Max Input Power:	100 W
Lightning Protection:	DC Ground

## Mechanical Data

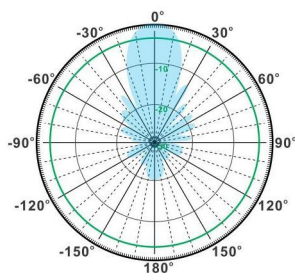
Connector :	N Female
Dimensions:	400*180*90mm
length*width*height	/15.7*7.1*3.5in
Weight:	3kg/6.6lb
Reflector Material:	Aluminum Alloy
Radome Material:	UV Resistance PVC
Mounting Method:	Mast
Mast Size:	Ø40-Ø70mm
Rated Wind Velocity:	210km/h
Operating temperature:	-40~+65°C

## Shipment Data

Packing Qty:	1pc/Carton
Carton Size:	465*220*135mm
(length*width*height)	18.3*8.7*5.3in
Packing Weight:	4.1kg/9.0lb

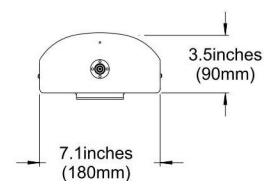
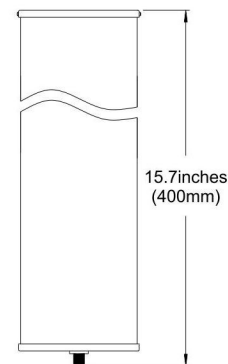


H-Plane



V-Plane

## PA1850-1960-120-11V



Email: [sales@dmswireless.com](mailto:sales@dmswireless.com)  
[www.dmswireless.com](http://www.dmswireless.com)

Notice: Specifications are subject to change without notice.  
Images may not reflect the actual product.