

DMS Wireless

2400-2500 MHz 65° HV-POL

Electrical Data

Frequency:	2400-2500 MHz
Gain:	15 dBi
VSWR:	<1.5:1
Polarization:	Horizontal and Vertical
Horizontal Beamwidth:	65°
Vertical Beamwidth:	14°
Front-to-back ratio :	>20dB
Isolation:	>30dB
Cross-polar ratio:	>15dB ($\pm 60^\circ \geq 10$)
Impedance:	50 Ohms
Max Input Power:	100W
Lightning Protection:	DC Ground

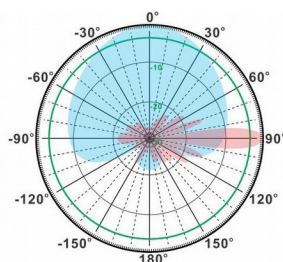
Mechanical Data

Connector :	2*N Female
Connector position:	Bottom
Dimensions:	550*134.5*64mm
length*width*height	21.6*5.3*2.5in
Weight:	2.3kg/5.1lb
Reflector Material:	Aluminum Alloy
Radome Material:	UV Resistance PVC
Mounting Method:	Mast
Mast Size:	Ø40-Ø70mm
Rated Wind Velocity:	210km/h
Operating temperature:	-40~+65°C

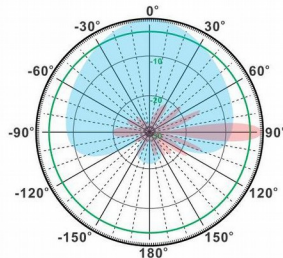
Shipment Data

Packing Qty:	1 pc/ Carton
Carton Size:	580*190*160mm
(length*width*height)	22.8*7.5*6.3in
Packing Weight:	3kg/6.6lb

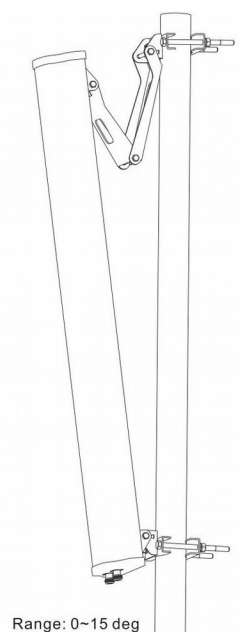
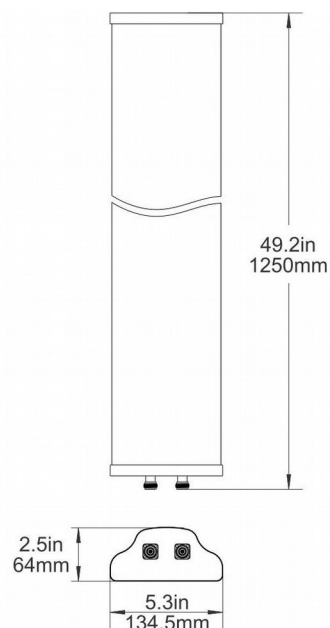
PA2400-2500-65-15HV



H-Plane



V-Plane



Range: 0~15 deg

Email: sales@dmswireless.com
www.dmswireless.com

Notice: Specifications are subject to change without notice.
Images may not reflect the actual product.