

# DMS Wireless

**806-960 MHz 120° V-POL**

## PA806-960-120-15V

### Electrical Data

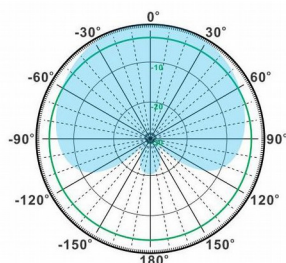
Frequency:	806-960 MHz
Gain:	15 dBi
VSWR:	<1.5:1
Polarization:	Vertical
Horizontal Beamwidth :	120°
Vertical Beamwidth:	8°
Nominal Impedance:	50 Ohms
F/B Ratio:	>20 dB
Max Input Power:	250 W
Lightning Protection:	DC Ground

### Mechanical Data

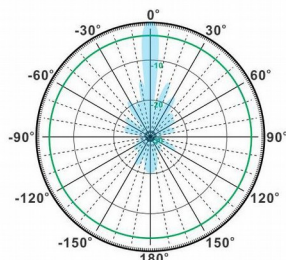
Connector :	N Female
Dimensions:	2422*290*130mm
length*width*height	/95.4*11.4*5.1in
Weight:	18.3kg/40.3lb
Reflector Material:	Aluminum Alloy
Radome Material:	UV Resistance PVC
Mounting Method:	Mast
Mast Size:	Ø50-Ø90mm
Rated Wind Velocity:	210km/h
Operating temperature:	-40~+65°C

### Shipment Data

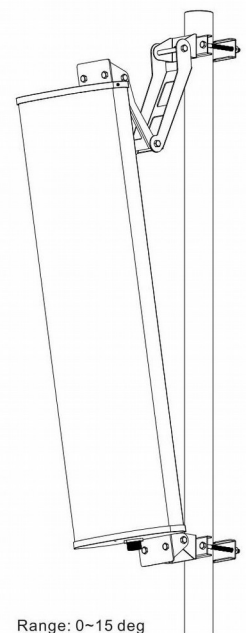
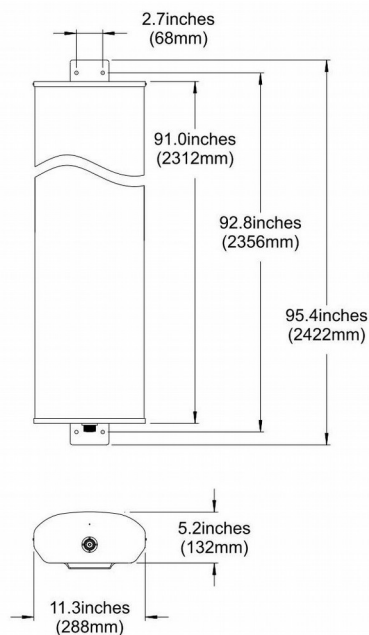
Packing Qty:	1pc/Carton
Carton Size:	2820*330*195mm
(length*width*height)	/111.0*13.0*7.7in
Packing Weight:	20.9kg/46.0lb



H-Plane



V-Plane



Email: [sales@dmswireless.com](mailto:sales@dmswireless.com)  
[www.dmswireless.com](http://www.dmswireless.com)

Notice: Specifications are subject to change without notice.  
 Images may not reflect the actual product.