

# DMS Wireless

890-960 MHz V-POL

## Electrical Data

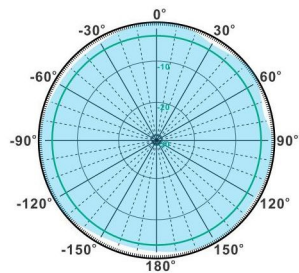
Frequency:	890-960 MHz
Gain:	6 dBi
VSWR:	<1.5:1
Polarization:	Vertical
Horizontal Beamwidth :	360°
Vertical Beamwidth:	21°
Nominal Impedance:	50 Ohms
Max Input Power:	100 W
Lightning Protection:	DC Ground

## Mechanical Data

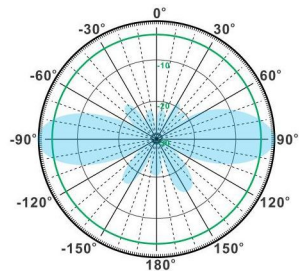
Connector :	N Female
Dimensions:	Ø20*450mm
(diameter*length)	/Ø0.79*17.72in
Weight:	0.53kg/1.17lb
Reflector Material:	Brass
Radome Material:	Fiberglass
Mounting Method:	Mast
Mast Size:	Ø30-Ø50mm
Rated Wind Velocity:	210km/h
Operating temperature:	-40~+65°C

## Shipment Data

Packing Qty:	40pcs/Carton
Carton Size:	605*340*240mm
(length*width*height)	23.8*13.4*9.4in
Packing Weight:	22.66kg/49.91lb

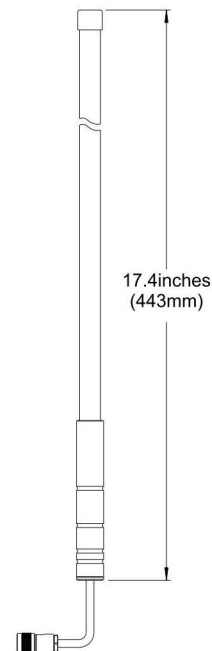
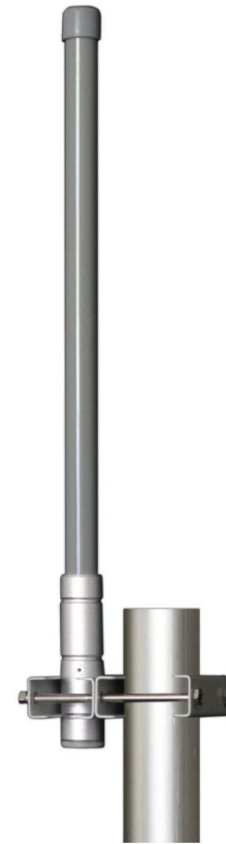


H-Plane



V-Plane

## OM890-960-6V



Email: [sales@dmswireless.com](mailto:sales@dmswireless.com)  
[www.dmswireless.com](http://www.dmswireless.com)

Notice: Specifications are subject to change without notice.  
Images may not reflect the actual product.