

# DMS Wireless

**3400-3600 MHz 90° V-POL**

## Electrical Data

|                        |               |
|------------------------|---------------|
| Frequency:             | 3400-3600 MHz |
| Gain:                  | 16 dBi        |
| VSWR:                  | <1.5:1        |
| Polarization:          | Vertical      |
| Horizontal Beamwidth : | 90°           |
| Vertical Beamwidth:    | 8°            |
| Nominal Impedance:     | 50 Ohms       |
| F/B Ratio:             | >20 dB        |
| Max Input Power:       | 100 W         |
| Lightning Protection:  | DC Ground     |

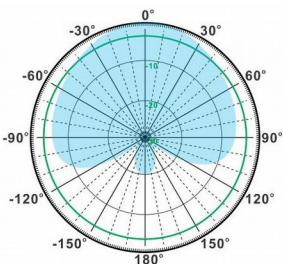
## Mechanical Data

|                        |                   |
|------------------------|-------------------|
| Connector :            | N Female          |
| Dimensions:            | 766*165*70mm      |
| length*width*height    | /30.6*6.5*2.8in   |
| Weight:                | 4kg/8.8lb         |
| Reflector Material:    | Aluminum Alloy    |
| Radome Material:       | UV Resistance PVC |
| Mounting Method:       | Mast              |
| Mast Size:             | Ø40-Ø70mm         |
| Rated Wind Velocity:   | 210km/h           |
| Operating temperature: | -40~+65°C         |

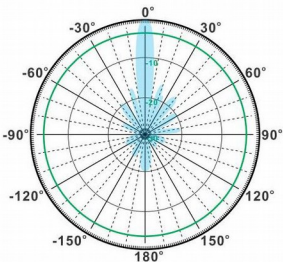
## Shipment Data

|                       |                 |
|-----------------------|-----------------|
| Packing Qty:          | 1pc/Carton      |
| Carton Size:          | 1040*200*110mm  |
| (length*width*height) | /40.9*7.9*4.3in |
| Packing Weight:       | 4.6kg/10.1lb    |

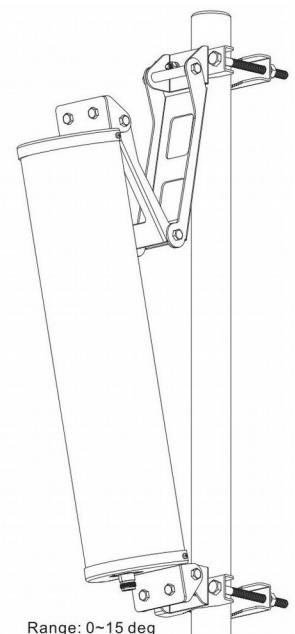
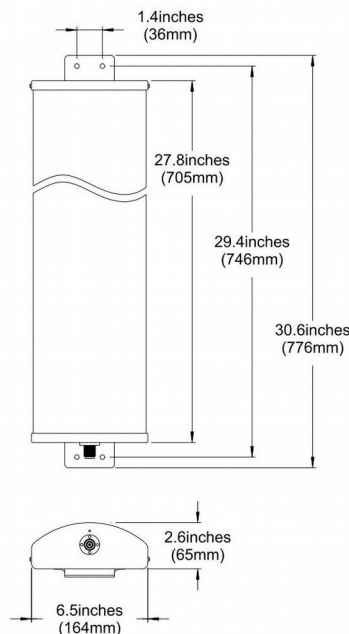
## PA3400-3600-90-16V



H-Plane



V-Plane



Range: 0~15 deg

Email: [sales@dmswireless.com](mailto:sales@dmswireless.com)  
[www.dmswireless.com](http://www.dmswireless.com)

Notice: Specifications are subject to change without notice.  
 Images may not reflect the actual product.