

DMS Wireless

825-880 MHz V-POL

Electrical Data

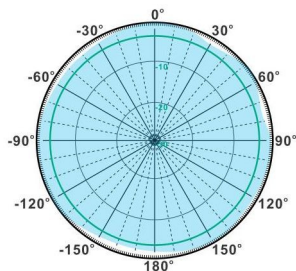
Frequency:	825-880 MHz
Gain:	6 dBi
VSWR:	<1.5
Polarization:	Vertical
Horizontal Beamwidth :	360°
Vertical Beamwidth:	40°
Electrical downtilt :	10°
Nominal Impedance:	50Ω
Max Input Power:	100W
Lightning Protection:	DC Ground

Mechanical Data

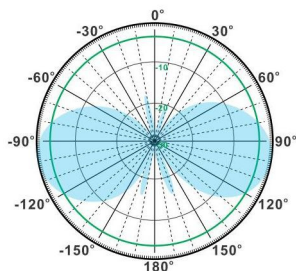
Connector :	N Female
Dimensions:	Ø20*950mm
(diameter*length)	/Ø0.8*37.4in
Weight:	0.4kg/0.9lb
Reflector Material:	Brass
Radome Material:	Fiberglass
Mounting Method:	Mast
Mast Size:	Ø30-Ø50mm
Rated Wind Velocity:	210km/h
Operating temperature:	-40~+65°C

Shipment Data

Packing Qty:	40pcs/Carton
Carton Size:	1050*345*245mm
(length*width*height)	/41.3*13.6*9.7in
Packing Weight:	16.5kg/36.3lb

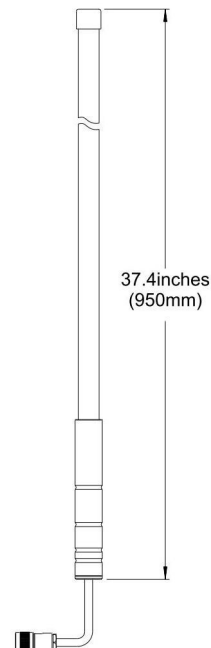
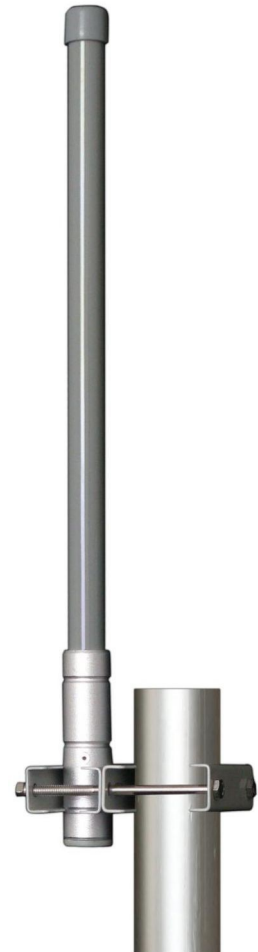


H-Plane



V-Plane

OM825-880-6V



Email: sales@dmswireless.com
www.dmswireless.com

Notice: Specifications are subject to change without notice.
Images may not reflect the actual product.