

DMS Wireless

2400-2483 MHz H-POL or V-POL

Electrical Data

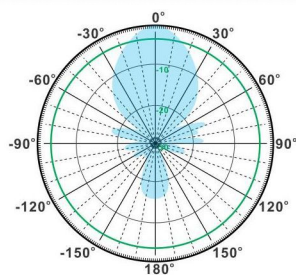
Frequency:	2400-2483 MHz
Gain:	13.5 dBi
VSWR:	<1.5:1
Polarization:	Horizontal or Vertical
Horizontal Beamwidth :	30°
Vertical Beamwidth:	25°
Nominal Impedance:	50 Ohms
F/B Ratio:	>16 dB
Max Input Power:	100 W
Lightning Protection:	DC Ground

Mechanical Data

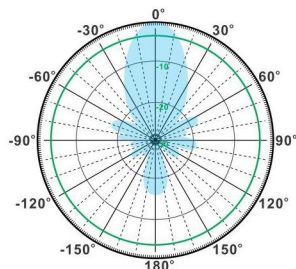
Connector :	N Female
Dimensions:	420mm/16.5in
Weight:	0.4kg/8.8lb
Cable Length:	230mm/9.1in
Reflector Material:	Aluminum Alloy
Radome Material:	Weatherproof ABS
Mounting Method:	Mast
Mast Size:	Ø40-Ø50mm
Rated Wind Velocity:	210km/h
Operating temperature:	-40~+65°C

Shipment Data

Packing Qty:	25pcs/Carton
Carton Size:	520*480*280mm
(length*width*height)	20.5*18.9*11.0in
Packing Weight:	11kg/24.2lb

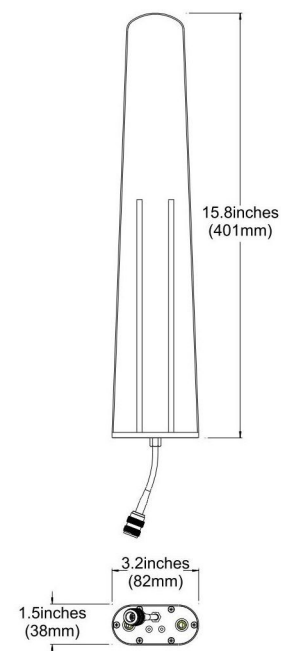


H-Plane



V-Plane

YAR2400-2483-13.5HV-15E



Email: sales@dmswireless.com
www.dmswireless.com

Notice: Specifications are subject to change without notice.
Images may not reflect the actual product.