

# DMS Wireless

**900-930 MHz H-POL or V-POL**

## Electrical Data

Frequency:	900-930 MHz
Gain:	18 dBi
VSWR:	<1.5:1
Polarization:	Horizontal or Vertical
Horizontal Beamwidth :	25°
Vertical Beamwidth:	23°
Nominal Impedance:	50 Ohms
F/B Ratio:	>18 dB
Max Input Power:	100 W
Lightning Protection:	DC Ground

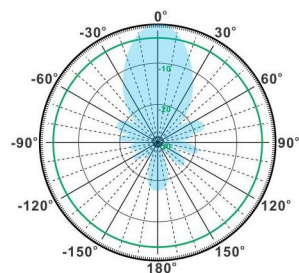
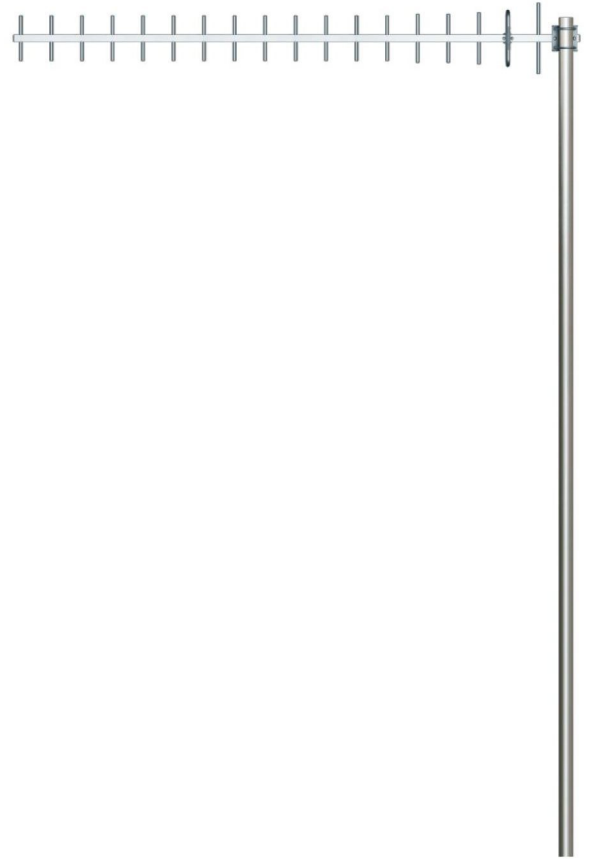
## Mechanical Data

Connector :	N Female
Dimensions:	1930mm/76.0in
Weight:	1.1kg/2.4lb
Cable Length:	300mm/11.8in
Reflector Material:	Aluminum Alloy
Antenna Material:	Mast
Mast Size:	Ø40-Ø50mm
Rated Wind Velocity:	210km/h
Operating temperature:	-40~+65°C

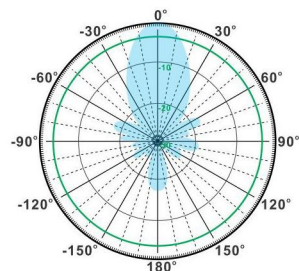
## Shipment Data

Packing Qty:	10pcs/Carton
Carton Size:	1165*410*375mm
(length*width*height)	/45.9*16.1*14.8in
Packing Weight:	16.6kg/36.6lb

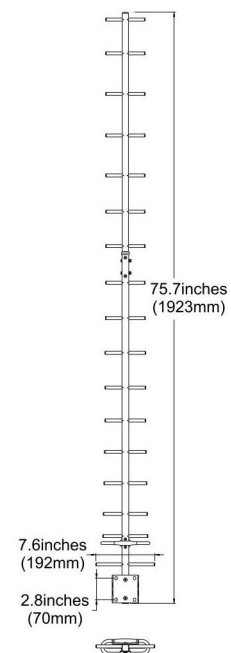
## YA900-930-18HV-18E



H-Plane



V-Plane



Email: [sales@dmswireless.com](mailto:sales@dmswireless.com)  
[www.dmswireless.com](http://www.dmswireless.com)

Notice: Specifications are subject to change without notice.  
Images may not reflect the actual product.