

DMS Wireless

1920-2170 MHz 90° V-POL

Electrical Data

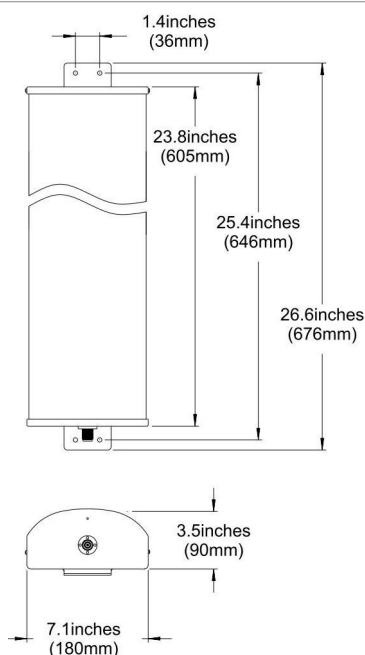
Frequency:	1920-2170 MHz
Gain:	14 dBi
VSWR:	<1.5:1
Polarization:	Vertical
Horizontal Beamwidth :	90°
Vertical Beamwidth:	14°
Nominal Impedance:	50 Ohms
F/B Ratio:	>20 dB
Max Input Power:	100 W
Lightning Protection:	DC Ground

Mechanical Data

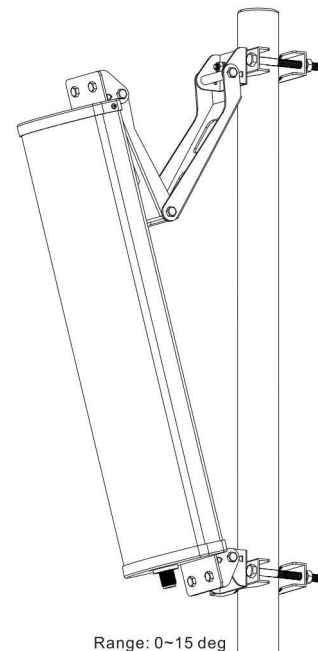
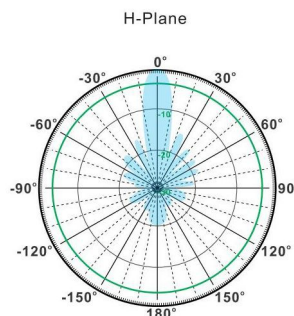
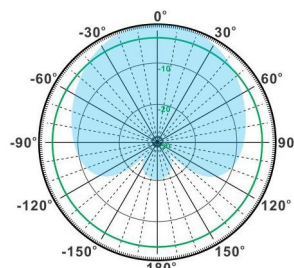
Connector :	N Female
Dimensions:	700*180*100mm
length*width*height	/27.6*7.1*3.9in
Weight:	3.4kg/7.5lb
Reflector Material:	Aluminum Alloy
Radome Material:	UV Resistance PVC
Mounting Method:	Mast
Mast Size:	Ø40-Ø70mm
Rated Wind Velocity:	210km/h
Operating temperature:	-40~+65°C

Shipment Data

Packing Qty:	1 pc/ Carton
Carton Size:	940*220*135mm
(length*width*height)	/37.0*8.7*5.3in
Packing Weight:	5kg/11.0lb



PA1920-2170-90-14V



Email: sales@dmswireless.com
www.dmswireless.com

Notice: Specifications are subject to change without notice.
Images may not reflect the actual product.