

DMS Wireless

2400-2483 MHz H-POL

Electrical Data

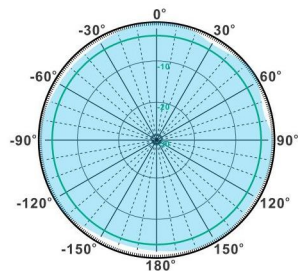
Frequency:	2400-2483 MHz
Gain:	9 dBi
VSWR:	<1.5:1
Polarization:	Horizontal
Horizontal Beamwidth :	360°
Vertical Beamwidth:	12°
Nominal Impedance:	50 Ohms
Max Input Power:	100 W
Lightning Protection:	DC Ground

Mechanical Data

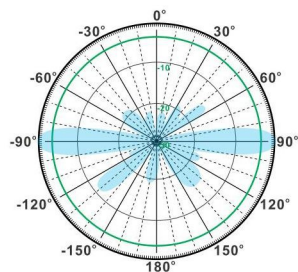
Connector :	N Female
Dimensions:	1000*100*45mm
(length*width*height)	/39.4*3.9*1.8in
Weight:	1.3kg/2.9lb
Reflector Material:	Brass
Mounting Method:	Mast
Mast Size:	Ø40-Ø60mm
Rated Wind Velocity:	210km/h
Operating temperature:	-40~+65°C

Shipment Data

Packing Qty:	5pcs/Carton
Carton Size:	1045*380*135mm
(length*width*height)	41.1*15.0*5.3in
Packing Weight:	7.7kg/17.0lb

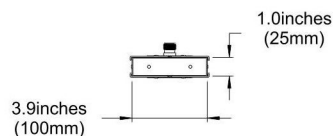
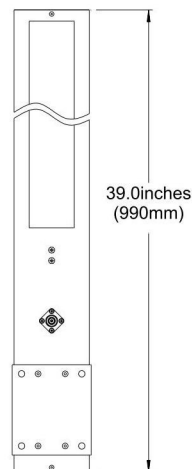


H-Plane



V-Plane

OM2400-2483-9H



Email: sales@dmswireless.com
www.dmswireless.com

Notice: Specifications are subject to change without notice.
Images may not reflect the actual product.