

# DMS Wireless

**3400-3600 MHZ V-POL**

## Electrical Data

Frequency:	3400-3600 MHz
Gain:	14 dBi
VSWR:	<1.5:1
Polarization:	Vertical
Horizontal Beamwidth :	30°
Vertical Beamwidth:	27°
Nominal Impedance:	50 Ohms
F/B Ratio:	>16 dB
Max Input Power:	100 W
Lightning Protection:	DC Ground

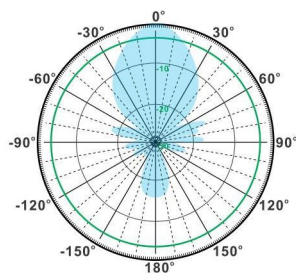
## Mechanical Data

Connector :	N Female
Dimension:	420mm/16.53in
Weight:	0.4kg/8.8lb
Cable Length:	230mm/9.06in
Reflector Material:	Aluminum Alloy
Radome Material:	Weatherproof ABS
Mounting Method:	Mast
Mast Size:	Ø40-Ø50mm
Rated Wind Velocity:	210km/h
Operating temperature:	-40~+65°C

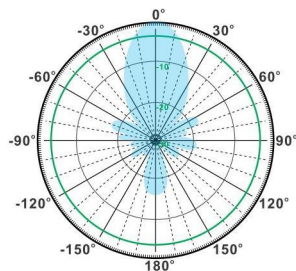
## Shipment Data

Packing Qty:	25pcs/Carton
Carton Size:	520*480*280mm
(length*width*height)	20.5*18.9*11.0in
Packing Weight:	11kg/24.2lb

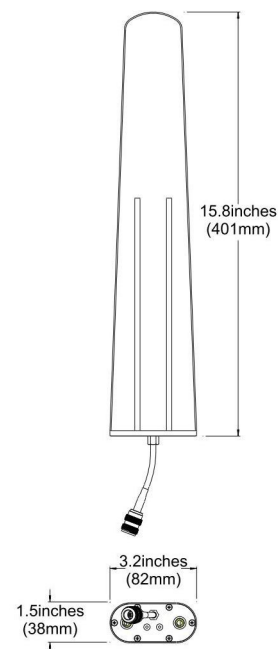
## YAR3400-3600-14V



H-Plane



V-Plane



Email: [sales@dmswireless.com](mailto:sales@dmswireless.com)  
[www.dmswireless.com](http://www.dmswireless.com)

Notice: Specifications are subject to change without notice.  
Images may not reflect the actual product.