

# DMS Wireless

**3300-3500 MHz 120° V-Pol**

## Electrical Data

Frequency:	3300-3500 MHz
Gain:	18 dBi
VSWR:	<1.5:1
Polarization:	Vertical
Horizontal Beamwidth :	120°
Vertical Beamwidth:	3.5°
Nominal Impedance:	50 Ohms
F/B Ratio:	>23 dB
Max Input Power:	100 W
Lightning Protection:	DC Ground

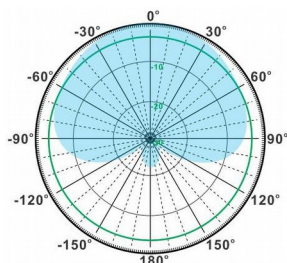
## Mechanical Data

Connector :	N Female
Dimensions:	1431 * 165 * 70mm
length*width*height	56.3*6.50*2.76in
Weight:	4.0kg/8.8lb
Reflector Material:	Aluminum Alloy
Radome Material:	UV Resistance PVC
Mounting Method:	Mast
Mast Size:	Ø40-Ø70mm
Rated Wind Velocity:	210km/h
Operating temperature:	-40~+65°C

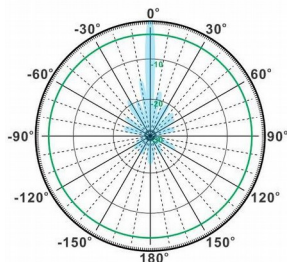
## Shipment Data

Packing Qty:	1pc/Carton
Carton Size:	1690*200*110mm
(length*width*height)	66.5*7.9*4.3in
Packing Weight:	4.5kg/9.9lb

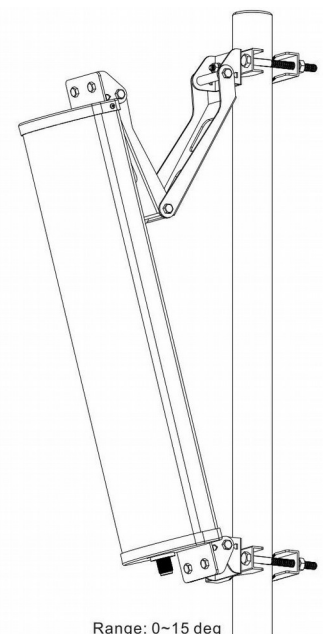
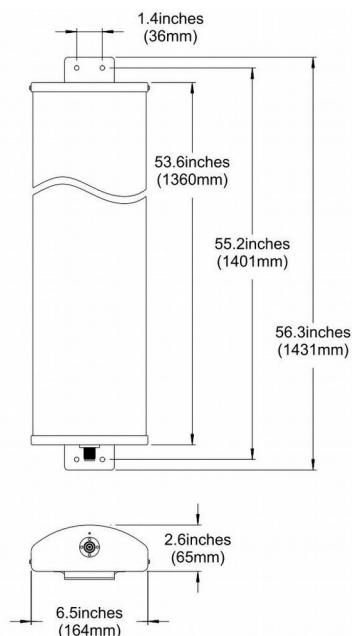
**PA3300-3500-120-18V**



H-Plane



V-Plane



Email: [sales@dmswireless.com](mailto:sales@dmswireless.com)  
[www.dmswireless.com](http://www.dmswireless.com)

Notice: Specifications are subject to change without notice.  
Images may not reflect the actual product.