

# DMS Wireless

**2400-2483 MHz 90° VV-POL**

**PA2400-2483-90-14VV**

## Electrical Data

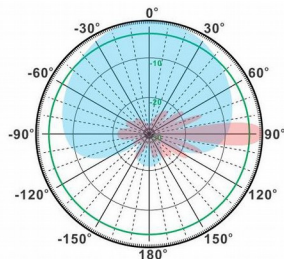
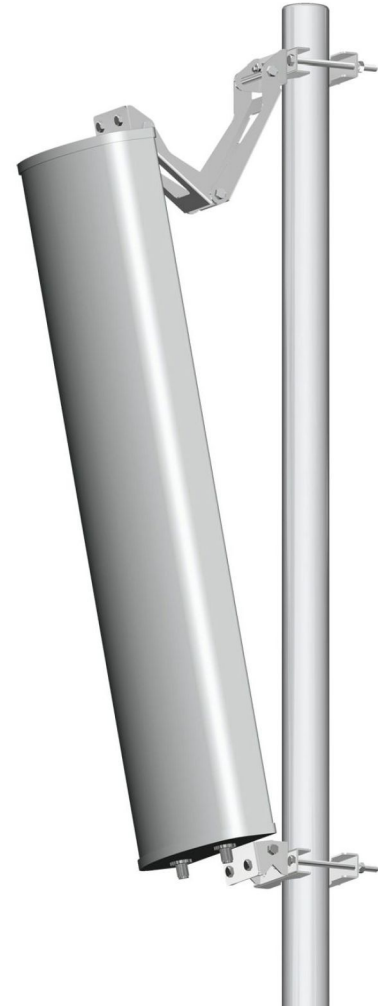
Frequency:	2400-2483 MHz
Gain:	14 dBi
VSWR:	<1.5:1
Polarization:	Vertical
Horizontal Beamwidth:	90°
Vertical Beamwidth:	13°
Electrical downtilt:	0°
Sidelobe suppression :	>15dB
(First sidelobe above main beam)	
Front-to-back ratio :	>20dB
Isolation:	>30dB
Cross-polar ratio:	>15dB ( $\pm 60^\circ \geq 10$ )
Intermodulation IM3:	>-150dBc
(2x43dBm carrier)	
Impedance:	50 Ohms
Max Input Power:	100W
Lightning Protection:	DC Ground

## Mechanical Data

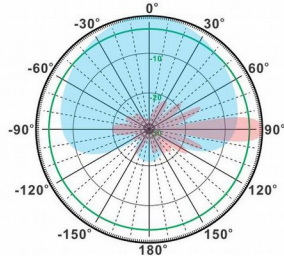
Connector :	2*N Female
Connector position:	Bottom
Dimensions:	546*265*94mm
length*width*height	21.5*10.4*3.7in
Weight:	3.3kg/7.3lb
Reflector Material:	Aluminum Alloy
Radome Material:	UV Resistance PVC
Mounting Method:	Mast
Mast Size:	Ø40-Ø70mm
Rated Wind Velocity:	210km/h
Operating temperature:	-40~-+65°C

## Shipment Data

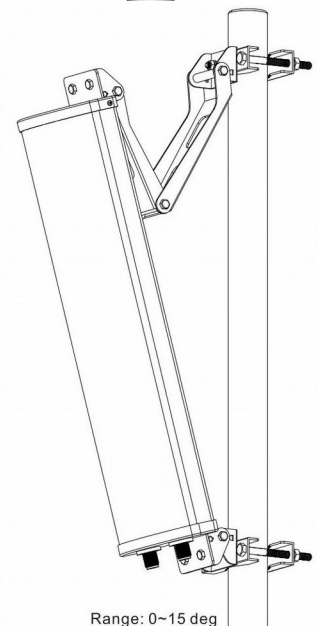
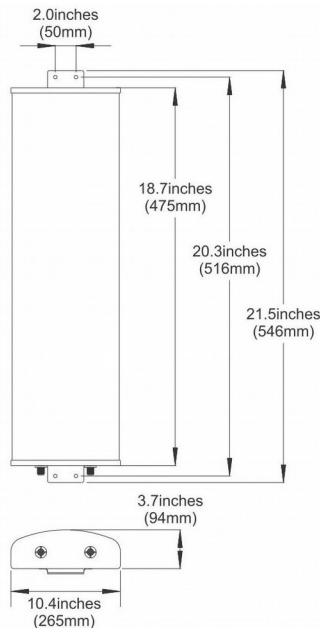
Packing Qty:	1pc/Carton
Carton Size:	850*300*120mm
(length*width*height)	/33.5*11.8*4.7in
Packing Weight:	4.5kg/9.9lb



H-Plane



V-Plane



Range: 0~15 deg

Email: [sales@dmswireless.com](mailto:sales@dmswireless.com)  
[www.dmswireless.com](http://www.dmswireless.com)

Notice: Specifications are subject to change without notice.  
 Images may not reflect the actual product.