

# DMS Wireless

## 790-960/1500-2700 MHz V-POL

### Electrical Data

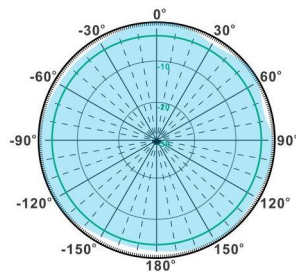
Frequency:	790-960 MHz	1500-2700 MHz
Gain:	2.5 dBi	4 dBi
VSWR:	<2.5:1	
Polarization:	Vertical	
Horizontal Beamwidth :	360°	
Vertical Beamwidth:	68°	55°
Nominal Impedance:	50 Ohms	
Max Input Power:	100 W	
Lightning Protection:	DC Ground	

### Mechanical Data

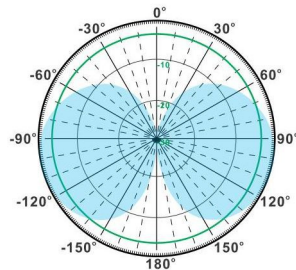
Connector :	N Female
Dimensions:	Ø80*250mm
length*width*height	Ø3.1*9.8in
Weight:	0.9kg/1.99lb
Reflector Material:	Aluminum Alloy
Radome Material:	Weatherproof ABS
Mounting Method:	Mast Or Wall Mount
Mast Size:	Ø30-Ø50mm
Rated Wind Velocity:	210km/h
Operating temperature:	-40~+65°C

### Shipment Data

Packing Qty:	20pcs/Carton
Carton Size:	290*460*470mm
(length*width*height)	11.4*18.1*18.5in
Packing Weight:	19kg/41.9lb

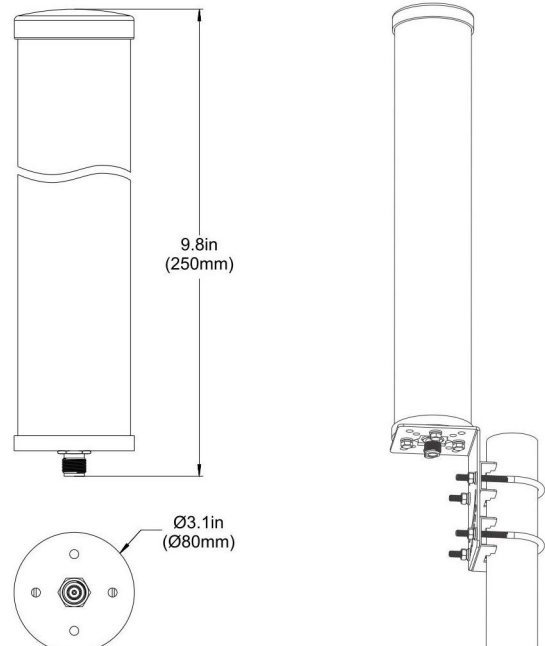


H-Plane



V-Plane

## OM790-2700-2.5V



Email: [sales@dmswireless.com](mailto:sales@dmswireless.com)  
[www.dmswireless.com](http://www.dmswireless.com)

Notice: Specifications are subject to change without notice.  
Images may not reflect the actual product.