

DMS Wireless

3400-3600 MHz V-POL

Electrical Data

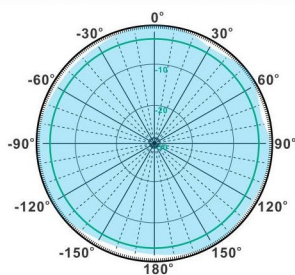
Frequency:	3400-3600 MHz
Gain:	9 dBi
VSWR:	<1.5
Polarization:	Vertical
Horizontal Beamwidth :	360°
Vertical Beamwidth:	12°
Electrical Uptilt:	20°
Nominal Impedance:	50Ω
Max Input Power:	100W
Lightning Protection:	DC Ground

Mechanical Data

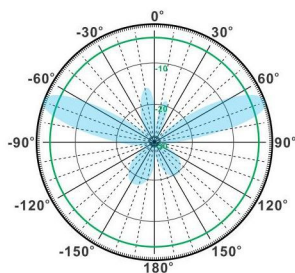
Connector :	N Female
Dimensions:	Ø38*695mm
(diameter*length)	Ø1.5*27.4in
Weight:	1.5kg/3.3lb
Reflector Material:	Brass
Radome Material:	Fiberglass
Mounting Method:	Mast
Mast Size:	Ø50-Ø80mm
Rated Wind Velocity:	210km/h
Operating temperature:	-40~+65°C

Shipment Data

Packing Qty:	2pcs/Carton
Carton Size:	Ø120*790mm
(length*width*height)	/Ø4.7*31.1in
Packing Weight:	4.2kg/9.3lb

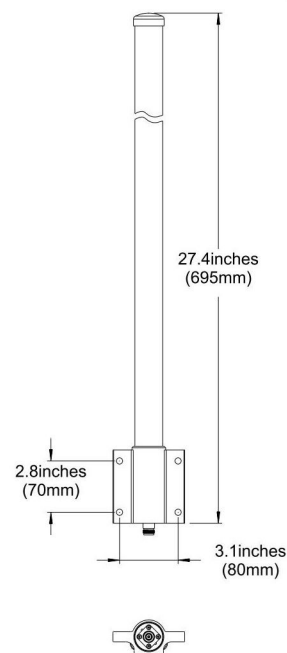
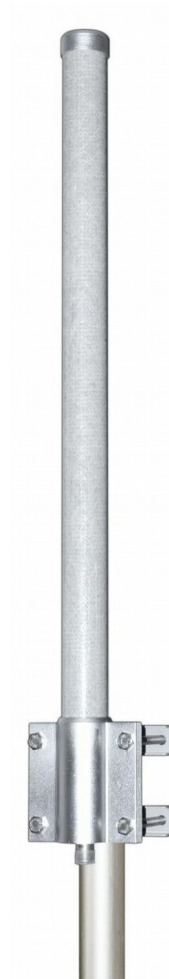


H-Plane



V-Plane

OM3400-3600-9V-20UT



Email: sales@dmswireless.com
www.dmswireless.com

Notice: Specifications are subject to change without notice.
Images may not reflect the actual product.