

DMS Wireless

1710-1880 MHz 65° V-POL

Electrical Data

| | |
|------------------------|---------------|
| Frequency: | 1710-1880 MHz |
| Gain: | 15 dBi |
| VSWR: | <1.5:1 |
| Polarization: | Vertical |
| Horizontal Beamwidth : | 65° |
| Vertical Beamwidth: | 14° |
| Nominal Impedance: | 50 Ohms |
| F/B Ratio: | >25 dB |
| Max Input Power: | 100 W |
| Lightning Protection: | DC Ground |

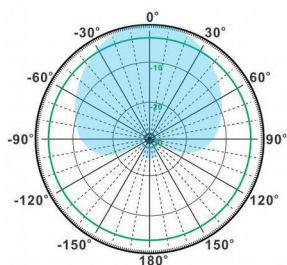
Mechanical Data

| | |
|------------------------|-------------------|
| Connector : | N Female |
| Dimensions: | 786*180*90mm |
| length*width*height | /30.9*7.1*3.5in |
| Weight: | 3kg/6.6lb |
| Reflector Material: | Aluminum Alloy |
| Radome Material: | UV Resistance PVC |
| Mounting Method: | Mast |
| Mast Size: | Ø40-Ø70mm |
| Rated Wind Velocity: | 210km/h |
| Operating temperature: | -40~+65°C |

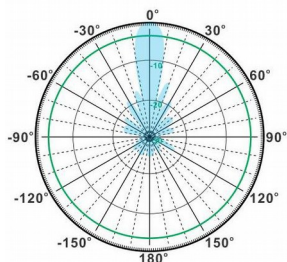
Shipment Data

| | |
|-----------------------|-----------------|
| Packing Qty: | 1pc/Carton |
| Carton Size: | 1050*220*135mm |
| (length*width*height) | /41.3*8.7*5.3in |
| Packing Weight: | 4kg/8.8lb |

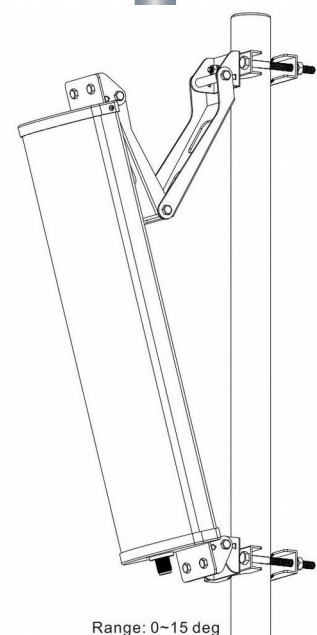
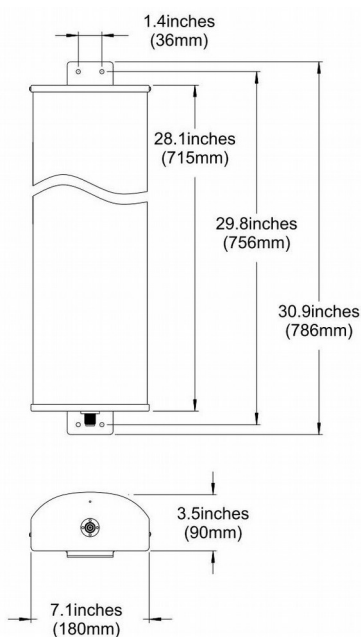
PA1710-1880-65-15V



H-Plane



V-Plane



Range: 0~15 deg

Email: sales@dmswireless.com
www.dmswireless.com

Notice: Specifications are subject to change without notice.
 Images may not reflect the actual product.