

# DMS Wireless

**698-960/1710-2700 MHz 80° X-POL**

## Electrical Data

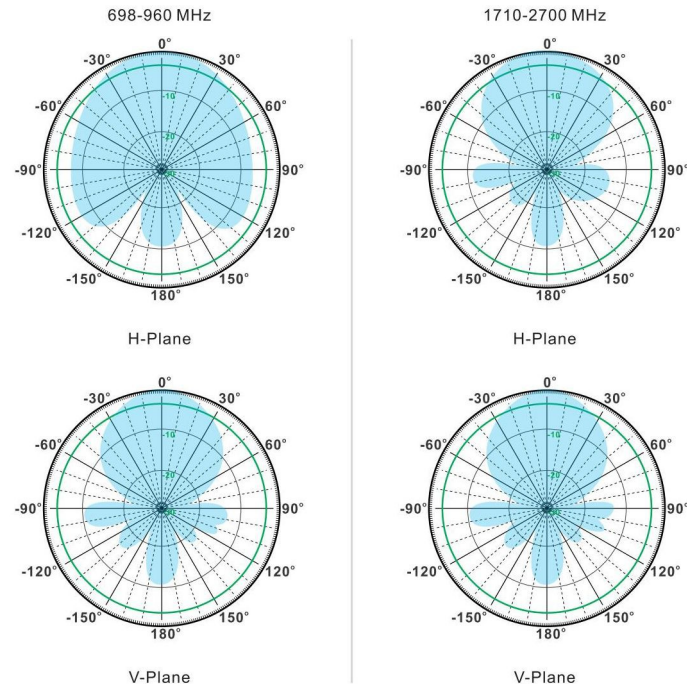
Frequency:	698-960 MHz	1710-2700 MHz
Gain:	8 dBi	9 dBi
VSWR:	<2.0:1	
Polarization:	±45°	
Horizontal Beamwidth :	80°	65°
Vertical Beamwidth:	55°	52°
Nominal Impedance:	50 Ohms	
F/B Ratio:	>25 dB	
Port Isolation:	>28 dB	
Max Input Power:	100 W	
Lightning Protection:	DC Ground	

## Mechanical Data

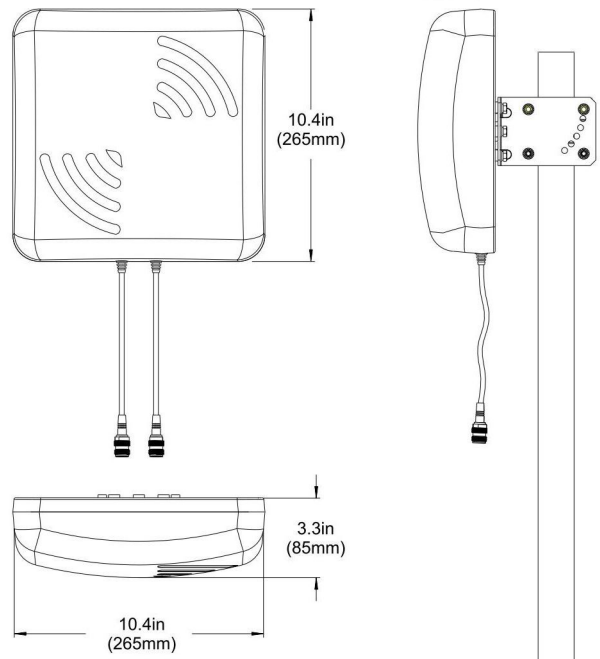
Connector :	2*SMA Female
Dimensions:	265*265*85mm
length*width*height	10.4*10.4*3.3in
Weight:	0.54kg/1.19lb
Reflector Material:	Aluminum Alloy
Radome Material:	Weatherproof ABS
Mounting Method:	Mast Or Wall Mount
Mast Size:	Ø30-Ø50mm
Rated Wind Velocity:	210km/h
Operating temperature:	-40~+65°C

## Shipment Data

Packing Qty:	10pcs/Carton
Carton Size:	460*310*550mm
(length*width*height)	18.1*12.2*21.7in
Packing Weight:	5.5kg/12.1lb



## PA698-2700-80-8X-2S



Email: [sales@dmswireless.com](mailto:sales@dmswireless.com)  
[www.dmswireless.com](http://www.dmswireless.com)

Notice: Specifications are subject to change without notice.  
 Images may not reflect the actual product.