

DMS Wireless

2400-2483 MHz H-POL

Electrical Data

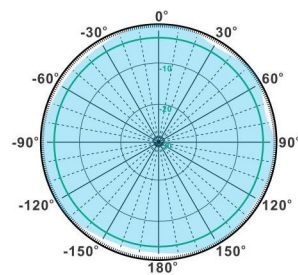
Frequency:	2400-2483 MHz
Gain:	14 dBi
VSWR:	<1.5:1
Polarization:	Horizontal
Horizontal Beamwidth :	360°
Vertical Beamwidth:	4°
Nominal Impedance:	50 Ohms
Max Input Power:	100 W
Lightning Protection:	DC Ground

Mechanical Data

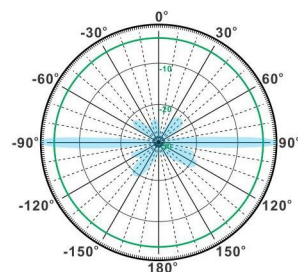
Connector :	N Female
Dimensions:	1755*100*45mm
(length*width*height)	/69.1*3.9*1.8in
Weight:	1.7kg/3.8lb
Reflector Material:	Brass
Mounting Method:	Mast
Mast Size:	Ø40-Ø60mm
Rated Wind Velocity:	210km/h
Operating temperature:	-40~+65°C

Shipment Data

Packing Qty:	5pcs/Carton
Carton Size:	1820*380*135mm
(length*width*height)	/71.7*15.0*5.3in
Packing Weight:	10.2kg/22.5lb

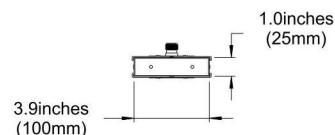
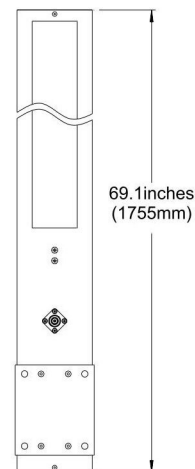


H-Plane



V-Plane

OM2400-2483-14H



Email: sales@dmswireless.com
www.dmswireless.com

Notice: Specifications are subject to change without notice.
Images may not reflect the actual product.