

DMS Wireless

890-960 MHz V-POL

Electrical Data

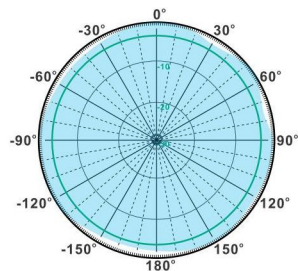
Frequency:	890-960 MHz
Gain:	5 dBi
VSWR:	<1.5:1
Polarization:	Vertical
Horizontal Beamwidth :	360°
Vertical Beamwidth:	28°
Nominal Impedance:	50 Ohms
Max Input Power:	100 W
Lightning Protection:	DC Ground

Mechanical Data

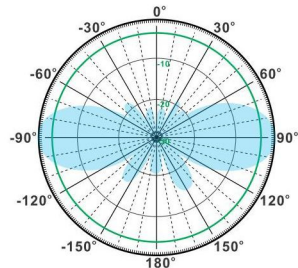
Connector :	N Female
Dimensions:	Ø20*450mm
(diameter*length)	/Ø0.8*17.7in
Weight:	0.5kg/1.2lb
Reflector Material:	Brass
Radome Material:	Fiberglass
Mounting Method:	Mast
Mast Size:	Ø30-Ø50mm
Rated Wind Velocity:	210km/h
Operating temperature:	-40~+65°C

Shipment Data

Packing Qty:	40pcs/Carton
Carton Size:	605*340*240mm
(length*width*height)	/23.8*13.4*9.4in
Packing Weight:	22.7kg/49.9lb

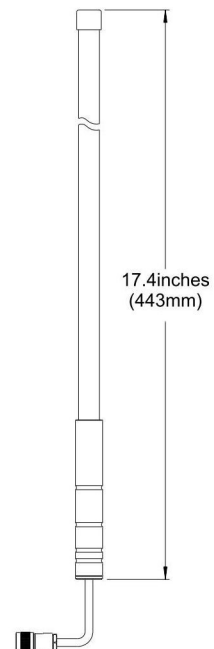
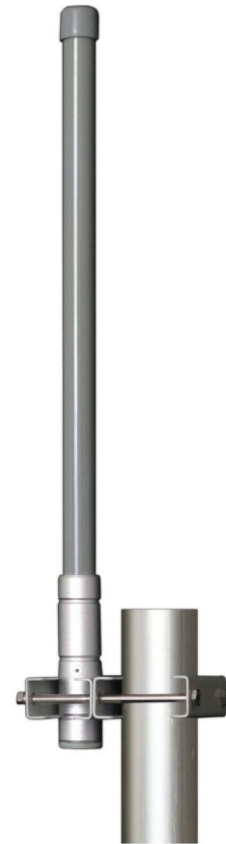


H-Plane



V-Plane

OM890-960-5V



Email: sales@dmswireless.com
www.dmswireless.com

Notice: Specifications are subject to change without notice.
Images may not reflect the actual product.