

DMS Wireless

5725-5850 MHz V-POL

Electrical Data

Frequency:	5725-5850 MHz
Gain:	12 dBi
VSWR:	<1.5:1
Polarization:	Vertical
Horizontal Beamwidth :	360°
Vertical Beamwidth:	7°
Nominal Impedance:	50 Ohms
Max Input Power:	100 W
Lightning Protection:	DC Ground

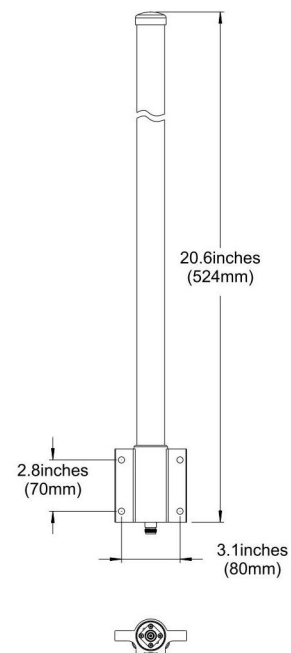
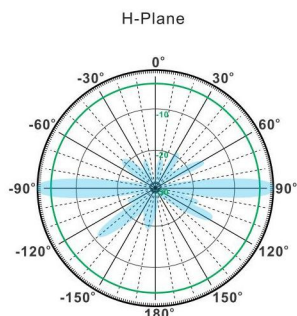
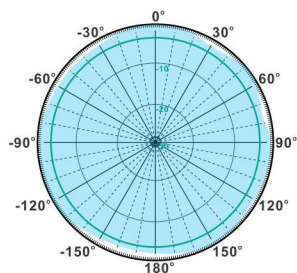
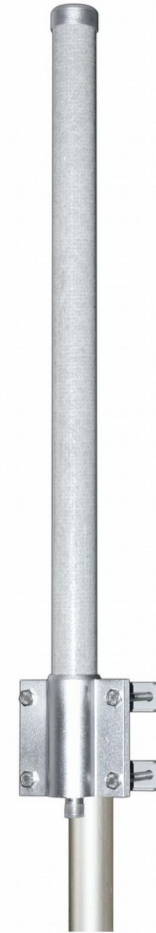
Mechanical Data

Connector :	N Female
Dimensions:	Ø38*524mm
(diameter*length)	Ø1.5*20.6in
Weight:	1.2kg/2.6lb
Reflector Material:	Brass
Radome Material:	Fiberglass
Mounting Method:	Mast
Mast Size:	Ø50-Ø80mm
Rated Wind Velocity:	210km/h
Operating temperature:	-40~+65°C

Shipment Data

Packing Qty:	2pcs/Carton
Carton Size:	570*110*100mm
(length*width*height)	22.4*4.3*3.9in
Packing Weight:	3kg/6.6lb

OM5725-5850-12V



Email: sales@dmswireless.com
www.dmswireless.com

Notice: Specifications are subject to change without notice.
Images may not reflect the actual product.