

DMS Wireless

1850-1960 MHz 90° V-POL

Electrical Data

Frequency:	1850-1960 MHz
Gain:	14 dBi
VSWR:	<1.5:1
Polarization:	Vertical
Horizontal Beamwidth :	90°
Vertical Beamwidth:	14°
Nominal Impedance:	50 Ohms
F/B Ratio:	>20 dB
Max Input Power:	100 W
Lightning Protection:	DC Ground

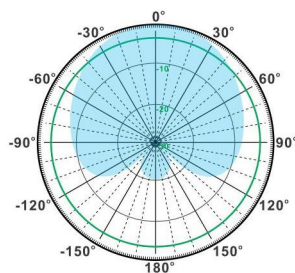
Mechanical Data

Connector :	N Female
Dimensions:	756*180*90mm
length*width*height	/29.8*7.1*3.5in
Weight:	3.7kg/7.5lb
Reflector Material:	Aluminum Alloy
Radome Material:	UV Resistance PVC
Mounting Method:	Mast
Mast Size:	Ø40-Ø70mm
Rated Wind Velocity:	210km/h
Operating temperature:	-40~+65°C

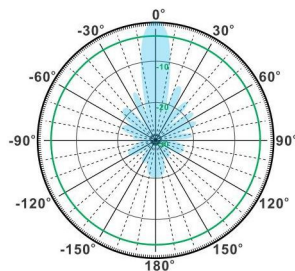
Shipment Data

Packing Qty:	1pc/Carton
Carton Size:	1020*220*135cm
(length*width*height)	/40.2*8.7*5.3in
Packing Weight:	5kg/11.0lb

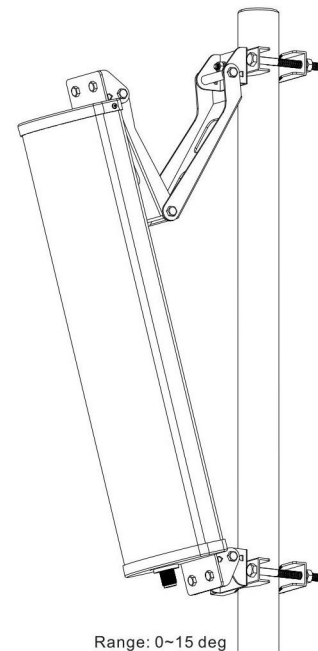
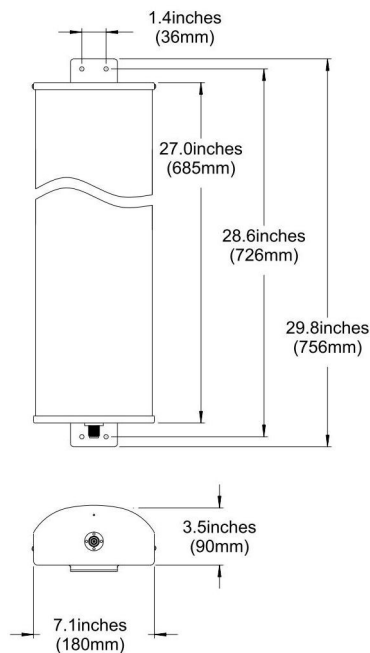
PA1850-1960-90-14V



H-Plane



V-Plane



Email: sales@dmswireless.com
www.dmswireless.com

Notice: Specifications are subject to change without notice.
Images may not reflect the actual product.