

# DMS Wireless

806-960/1710-1990 MHz 90° V-POL

## Electrical Data

Frequency:	806-960 MHz	1710-1990 MHz
Gain:	12 dBi	12 dBi
VSWR:	<1.5:1	<1.5:1
Polarization:	Vertical	Vertical
Horizontal Beamwidth :	83°±5°	90°±5°
Vertical Beamwidth:	30°	30°
Nominal Impedance:	50 Ohms	50 Ohms
F/B Ratio:	>25 dB	>25 dB
Max Input Power:	100 W	100 W
Lightning Protection:	DC Ground	DC Ground

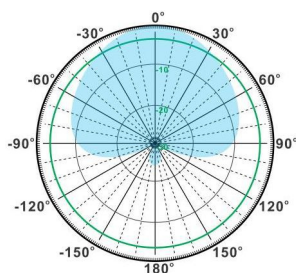
## Mechanical Data

Connector :	7/16 DIN
Dimensions:	1126*270*130mm
length*width*height	/44.4*10.6*5.1in
Weight:	13.5kg/29.7lb
Reflector Material:	Aluminum Alloy
Radome Material:	UV Resistance PVC
Mounting Method:	Mast
Mast Size:	Ø40-Ø90mm
Rated Wind Velocity:	210km/h
Operating temperature:	-40~+65°C

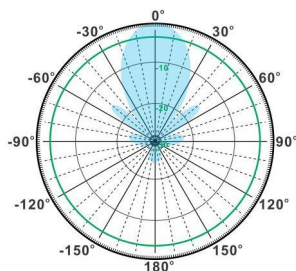
## Shipment Data

Packing Qty:	1pc/Carton
Carton Size:	1520*340*195mm
(length*width*height)	59.8*13.4*7.7in
Packing Weight:	15kg/33.0lb

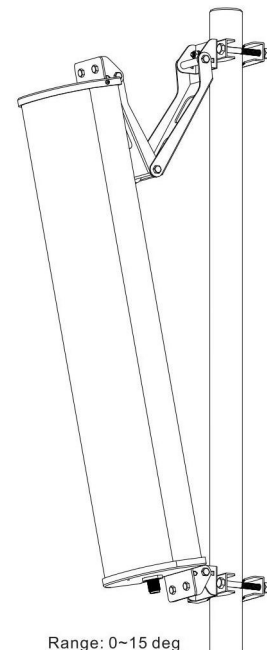
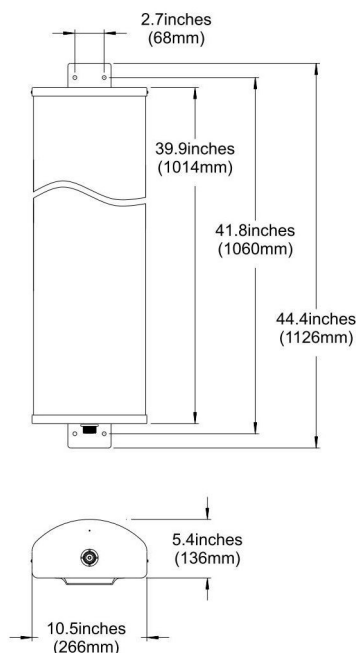
## PA806-1990-90-12V



H-Plane



V-Plane



Range: 0~15 deg

Email: [sales@dmswireless.com](mailto:sales@dmswireless.com)  
[www.dmswireless.com](http://www.dmswireless.com)

Notice: Specifications are subject to change without notice.  
 Images may not reflect the actual product.