

DMS Wireless

380-400 MHz V-POL

Electrical Data

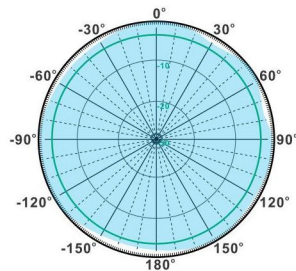
Frequency:	380-400 MHz
Gain:	7 dBi
VSWR:	<1.5:1
Polarization:	Vertical
Horizontal Beamwidth :	360°
Vertical Beamwidth:	25°
Nominal Impedance:	50 Ohms
Max Input Power:	250 W
Lightning Protection:	DC Ground

Mechanical Data

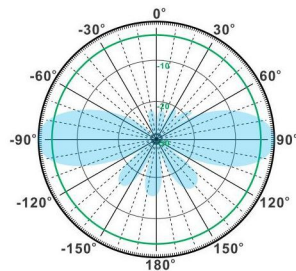
Connector :	7/16 DIN
Dimensions:	Ø38*2500mm
(diameter*length)	/Ø1.5*98.4in
Weight:	5.0kg/11.0lb
Reflector Material:	Brass
Radome Material:	Fiberglass
Mounting Method:	Mast
Mast Size:	Ø50-Ø80mm
Rated Wind Velocity:	210km/h
Operating temperature:	-40~+65°C

Shipment Data

Packing Qty:	2pcs/Carton
Carton Size:	Ø120*2600mm
(length*width*height)	Ø4.7*102.4in
Packing Weight:	11.5kg/25.3lb

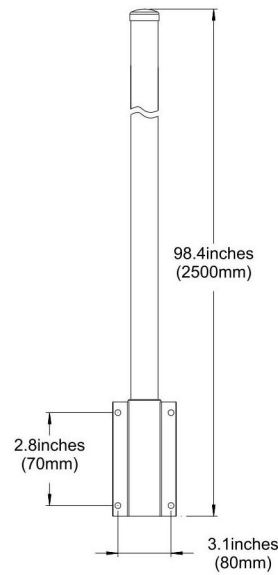
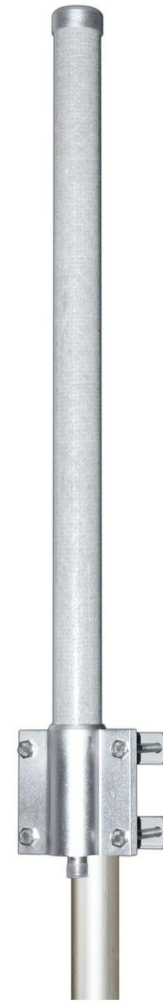


H-Plane



V-Plane

OM380-400-7V



Email: sales@dmswireless.com
www.dmswireless.com

Notice: Specifications are subject to change without notice.
Images may not reflect the actual product.