

DMS Wireless

600-698 MHz H-Pol or V-Pol

Electrical Data

Frequency:	600-698 MHz
Gain:	14 dBi
VSWR:	<1.5:1
Polarization:	Horizontal Or Vertical
Horizontal Beamwidth :	34°
Vertical Beamwidth:	30°
Nominal Impedance:	50 Ohms
F/B Ratio:	>16 dB
Max Input Power:	100 W
Lightning Protection:	DC Ground

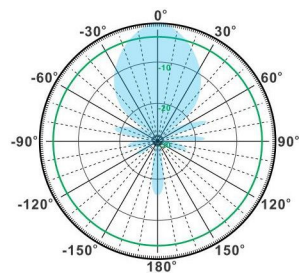
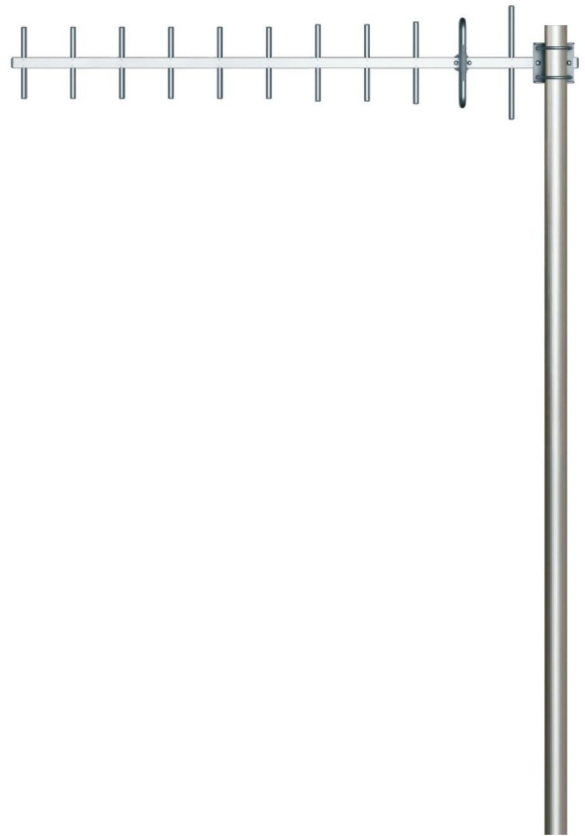
Mechanical Data

Connector :	N Female
Dimension:	1310mm/51.6in
Weight:	0.98kg/2.16lb
Cable Length:	330mm/13.0in
Reflector Material:	Aluminum Alloy
Antenna Material:	Mast
Mast Size:	Ø40-Ø50mm
Rated Wind Velocity:	210km/h
Operating temperature:	-40~+65°C

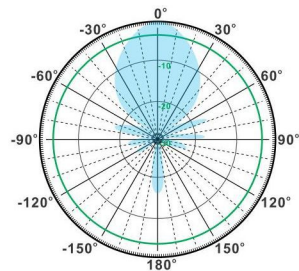
Shipment Data

Packing Qty:	5pcs/Carton
Carton Size:	1340*290*430mm
(length*width*height)	/52.8*11.4*16.9in
Packing Weight:	6.5kg/14.3lb

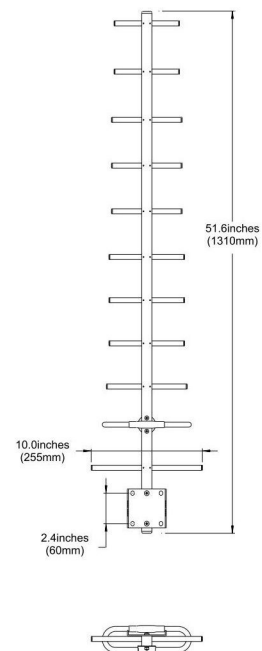
YA600-698-14HV-11E



H-Plane



V-Plane



Email: sales@dmswireless.com
www.dmswireless.com

Notice: Specifications are subject to change without notice.
Images may not reflect the actual product.