

DMS Wireless

1710-1880 MHz V-POL

Electrical Data

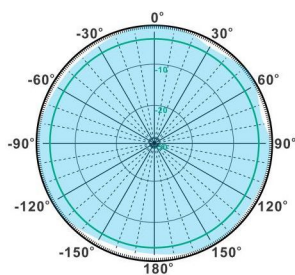
Frequency:	1710-1880 MHz
Gain:	11 dBi
VSWR:	<1.5:1
Polarization:	Vertical
Horizontal Beamwidth :	360°
Vertical Beamwidth:	7°
Nominal Impedance:	50 Ohms
Max Input Power:	100 W
Lightning Protection:	DC Ground

Mechanical Data

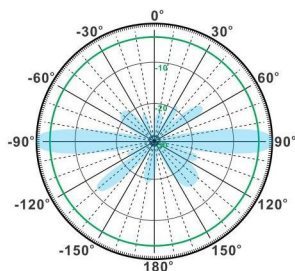
Connector :	N Female
Dimensions:	Ø38*1300cm
(diameter*length)	Ø1.5*51.2in
Weight:	1.7kg/3.72lb
Reflector Material:	Brass
Radome Material:	Fiberglass
Mounting Method:	Mast
Mast Size:	Ø40-Ø60mm
Rated Wind Velocity:	210km/h
Operating temperature:	-40~+65°C

Shipment Data

Packing Qty:	2pcs/Carton
Carton Size:	1250*110*100mm
(length*width*height)	49.2*4.3*3.9in
Packing Weight:	5kg/11.0lb

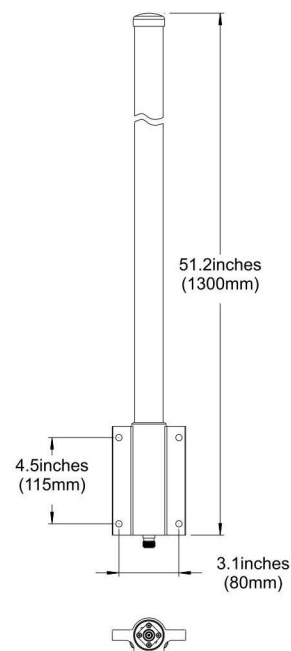
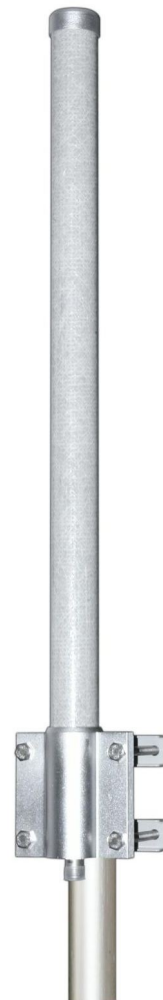


H-Plane



V-Plane

OM1710-1880-11V



Email: sales@dmswireless.com
www.dmswireless.com

Notice: Specifications are subject to change without notice.
Images may not reflect the actual product.