

DMS Wireless

890-960 MHz H-POL or V-POL

Electrical Data

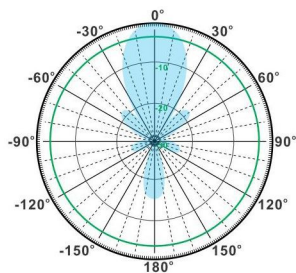
Frequency:	890-960 MHz	890-960 MHz
Gain:	13.5 dBi	16 dBi
VSWR:	<1.5:1	<1.5:1
Polarization:	H or V	H or V
Horizontal Beamwidth :	30°	30°
Vertical Beamwidth:	27°	27°
Nominal Impedance:	50 Ohms	50 Ohms
F/B Ratio:	>18 dB	>18 dB
Max Input Power:	100 W	100 W
Lightning Protection:	DC Ground	DC Ground

Mechanical Data

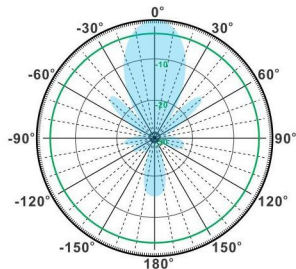
Connector :	N Female
Dimensions:	1410mm/55.5in
Weight:	1.1kg/2.4lb
Cable Length:	300mm/11.8in
Reflector Material:	Aluminum Alloy
Mounting Method:	Mast
Mast Size:	Ø40-Ø50mm
Rated Wind Velocity:	210km/h
Operating temperature:	-40~+65°C

Shipment Data

Packing Qty:	10pcs/Carton
Carton Size:	1450*390*325mm
(length*width*height)	57.1*15.4*12.8in
Packing Weight:	12kg/26.4lb

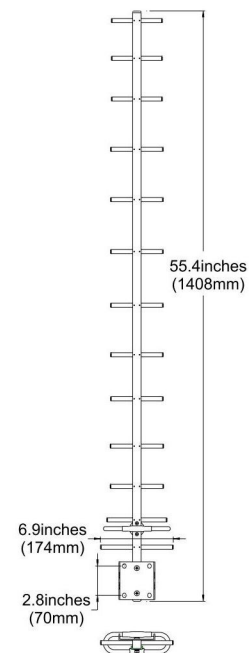
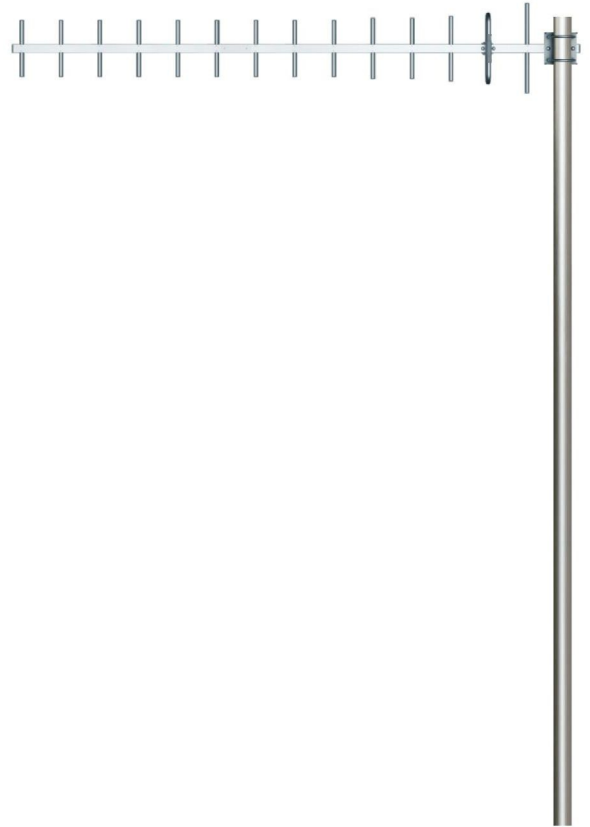


H-Plane



V-Plane

YA890-960-13.5HV-14E



Email: sales@dmswireless.com
www.dmswireless.com

Notice: Specifications are subject to change without notice.
 Images may not reflect the actual product.