

# DMS Wireless

**5150-5850 MHz 120° HV-POL**

## Electrical Data

Frequency:	5150-5850 MHz
Gain:	18 dBi
VSWR:	<1.5:1
Polarization:	Horizontal and Vertical
Horizontal Beamwidth:	120°
Vertical Beamwidth:	4°
Electrical downtilt:	0°
Sidelobe suppression :	>15dB
(First sidelobe above main beam)	
Front-to-back ratio :	>25dB
Isolation:	>30dB
Cross-polar ratio:	>15dB ( $\pm 60^\circ \geq 10$ )
Intermodulation IM3:	>-150dBc
(2x43dBm carrier)	
Impedance:	50 Ohms
Max Input Power:	100W
Lightning Protection:	DC Ground

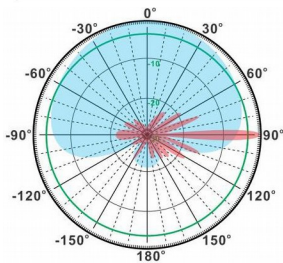
## Mechanical Data

Connector :	2*N Female
Connector position:	Bottom
Dimensions:	750*115*55mm
length*width*height	29.5*4.5*2.2in
Weight:	4kg/8.8lb
Reflector Material:	Aluminum Alloy
Radome Material:	UV Resistance PVC
Mounting Method:	Mast
Mast Size:	Ø40-Ø70mm
Rated Wind Velocity:	210km/h
Operating temperature:	-40~+65°C

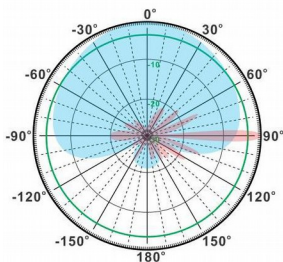
## Shipment Data

Packing Qty:	1pc/Carton
Carton Size:	125*65*760mm
(length*width*height)	4.9*2.6*29.9in
Packing Weight:	5kg/11.0lb

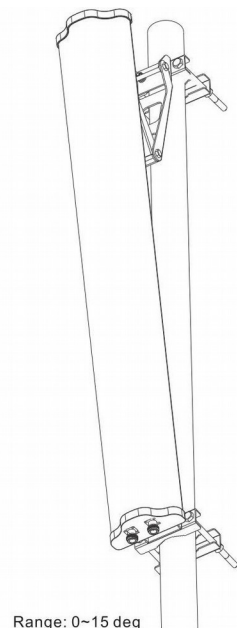
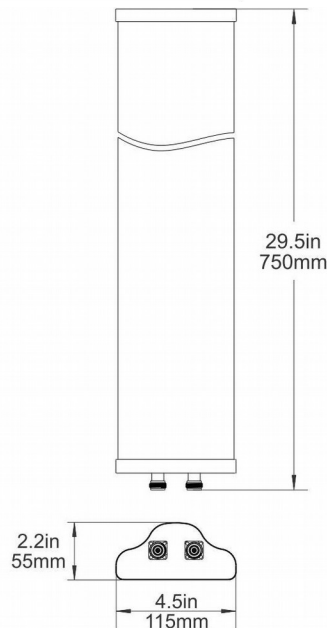
**PA5150-5850-120-18HV-2N**



H-Plane



V-Plane



Range: 0~15 deg

Email: [sales@dmswireless.com](mailto:sales@dmswireless.com)  
[www.dmswireless.com](http://www.dmswireless.com)

Notice: Specifications are subject to change without notice.  
 Images may not reflect the actual product.